

BOBCAT COMPANY PRICE PAGES NA EXCAVATORS - ATTACHMENTS



Please note the following when using Bobcat Price Pages:

- All prices are shown in U.S. dollars.
- Check BobcatNET Pricing Homepage for current Canadian exchange rate.
- For current Dealer Installed Accessories pricing, reference BobQuote or Dealer Parts Department.
- Prices and specifications are subject to change without notice.

THE FOLLOWING UPDATES HAVE BEEN MADE TO THIS DOCUMENT:

Date	Description of Change
12/22/2010	Attachments have been updated for the increased flow capabilities of the E60.
3/1/2011	Updated Trencher part number.
4/22/2011	Updated attachment approvals for the E55.
11/17/2011	Updated attachment approvals for the E26.
5/3/2012	Added PCF34 Plate Compactor and updated rock bit part numbers.
3/15/2013	Added Smooth Lip Trenching Buckets and updated Trenching Bucket part numbers. Removed PC 60 Plate Compactor.
12/12/2013	Removed Model 30 and Model 40 Rotating Grapple.
4/23/2014	Added Pro Clamp™ System.
6/9/2014	Added 30" and 40" Flail Mower.
9/9/2014	Updated attachment approvals for the E20.
1/1/2015	Effective Thurs, January 1st, 2015 Bobcat Company has adjusted the SLP of select options and power units.
7/1/2015	Effective Wednesday, July 1st 2015, Bobcat Company has adjusted the SLP of select attachment options.
2/8/2016	Removed Discontinued Trenching Buckets PN's: 6534120, 6534121, 6534122, 6536055, 6536100, 6536130
2/26/2016	Added Auger shaft diameters.
7/1/2016	Effective Friday, July 1st 2016, Bobcat Company has adjusted the SLP of select attachment options.
1/6/2017	Added note about non-compatible E42-E55 hydra-tilt and Pro Clamp™
4/17/2017	Removed PN 7275231 & 6680073 Laser Transmitter
6/15/2017	Updated new Rippers
7/10/2017	Effective Monday, July 10st 2017, Bobcat Company has adjusted the SLP of select attachment options.
9/15/2017	Trenching and Grading buckets replaced Class III, IV, and new Class VI buckets for R-Series E85.
12/20/2017	Trenching and Grading buckets replaced Class II and new Class V bucket for E55 & E63. Added Caps and field installed Clamp for E85 R-Series.
1/1/2018	Effective Thurs, January 1st, 2018 Bobcat Company has adjusted the SLP of select options and power units.
1/31/2018	Replaced E26 breaker hose kit 7117832 with kit 7114762 that contains longer hoses
5/15/2018	Added E85R Tilting/Grading bucket
11/29/2018	NB Breaker line added
1/1/2019	Effective Tuesday, January 1st, 2019 Bobcat Company has adjusted the SLP of select attachment options.
7/18/2019	Added buckets and pin grabber coupler for E145.
9/26/2019	Removed Pro Clamp System Kit PN# (7221006, 7221011, 7240475, 7240477, 7240479, 7240481)
12/20/2019	Updated Footer to display 2020 Price Book
1/3/2020	Replaced CR600 with CR700
6/23/2020	July 1 Pricing Updates
8/3/2020	Updated Pin Grabber

**BOBCAT COMPANY PRICE PAGES
NA EXCAVATORS - ATTACHMENTS**

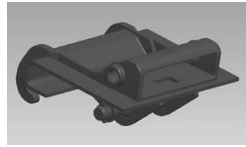


Please note the following when using Bobcat Price Pages:

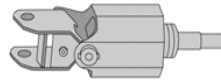
- All prices are shown in U.S. dollars.
- Check BobcatNET Pricing Homepage for current Canadian exchange rate.
- For current Dealer Installed Accessories pricing, reference BobQuote or Dealer Parts Department.
- Prices and specifications are subject to change without notice.

**Certain Specification(s) are based on engineering calculations and are not actual measurements. Specification(s) are provided for comparison purposes only and are subject to change without notice. Specification(s) for your individual Bobcat equipment will vary based on normal variations in design, manufacturing, operating conditions, and other factors.*

Auger Bobcat Excavator Attachment



Auger Interface



Auger Drive Unit

Quick Specs

	<u>Model</u> 10	<u>Model</u> 15C	<u>Model</u> 15H	<u>Model</u> 30C	<u>Model</u> 30H	<u>Model</u> 35PH	<u>Model</u> 50PH
Ship Wgt (Auger Drive).....	191 lbs.	245 lbs.	241 lbs.	263 lbs.	257 lbs.	325 lbs.	325 lbs.
Ship Weight (Coupler & Interface).....	111 lbs.	111 lbs.	111 lbs.	111 lbs.	111 lbs.	111 lbs.	111 lbs.
Operating Wgt (less bit).....	242 lbs.	296 lbs.	292 lbs.	314 lbs.	308 lbs.	376 lbs.	376 lbs.
Digging Depth (without extensions).....	58"	62"	62"	62"	62"	72"	72"
Shaft Diameter - Round.....	2.5"	2.5"	-	2.5"	-	-	-
Shaft Diameter - Hex.....	-	2.0"	2.0"	2.0"	2.0"	2.5"	2.5"
RPM							
@ 8 gpm (30 L/min.).....	48 rpm	-	-	-	-	-	-
@ 12 gpm (45 L/min.).....	72 rpm	57 rpm	57 rpm	-	-	-	-
@ 17 gpm (64 L/min.).....	102 rpm	80 rpm	80 rpm	41 rpm	41 rpm	-	-
@ 18 gpm (68 L/min.).....	-	-	-	-	-	46 rpm	36 rpm
@ 21 gpm (70 L/min.).....	-	99 rpm	99 rpm	51 rpm	51 rpm	-	-
@ 22 gpm (83 L/min.).....	-	-	-	-	-	56 rpm	45 rpm
@ 23 gpm (87 L/min.).....	-	109 rpm	109 rpm	56 rpm	56 rpm	-	-
@ 26 gpm (98 L/min.).....	-	-	-	-	-	67 rpm	53 rpm
@ 30 gpm (114 L/min.).....	-	-	-	70 rpm	70 rpm	77 rpm	61 rpm
@ 32 gpm (121 L/min.).....	-	-	-	-	-	82 rpm	65 rpm
@ 34 gpm (129 L/min.).....	-	-	-	-	-	87 rpm	69 rpm
@ 36 gpm (136 L/min.).....	-	-	-	-	-	92 rpm	73 rpm
@ 37 gpm (140 L/min.).....	-	-	-	90 rpm	90 rpm	-	-
@ 38 gpm (144 L/min.).....	-	-	-	-	-	98 rpm	77 rpm
Torque							
@ 2000 psi (19,788 kPa)....	1,021 ft.lb. (1,523 Nm)	1,300 ft.lb. (1,763 Nm)	1,300 ft.lb. (1,763 Nm)	2,520 ft.lb. (3,417 Nm)	2,520 ft.lb. (3,417 Nm)	2,387 ft.lb. (3,237 Nm)	3,023 ft.lb. (4,100 Nm)
@ 2400 psi (16,547 kPa)....	1,225 ft.lb. (1,661 Nm)	1,560 ft.lb. (2,115 Nm)	1,560 ft.lb. (2,115 Nm)	3,024 ft.lb. (4,100 Nm)	3,024 ft.lb. (4,100 Nm)	2,864 ft.lb. (3,884 Nm)	3,628 ft.lb. (4,920 Nm)
@ 2600 psi (17,926 kPa)....	-	-	-	-	-	3,103 ft.lb. (4,208 Nm)	3,931 ft.lb. (5,330 Nm)
@ 2800 psi (18,616 kPa)....	1,378 ft.lb. (1,868 Nm)	1,775 ft.lb. (2,379 Nm)	1,775 ft.lb. (2,379 Nm)	3,402 ft.lb. (4,213 Nm)	3,402 ft.lb. (4,213 Nm)	3,342 ft. lb. (4,531 Nm)	4,233 ft. lb. (5,740 Nm)
@ 3000 psi (20,684 kPa)....	1,532 ft.lb. (2,077 Nm)	1,950 ft.lb. (2,644 Nm)	1,950 ft.lb. (2,644 Nm)	3,780 ft.lb. (5,125 Nm)	3,780 ft.lb. (5,125 Nm)	3,580 ft. lb. (4,855 Nm)	4,535 ft. lb. (6,150 Nm)
@ 3200 psi (22,753 kPa)....	-	-	-	-	-	3,819 ft.lb. (5,179 Nm)	4,838 ft.lb. (6,560 Nm)
@ 3300 psi (22,753 kPa)....	-	2,415 ft.lb. (2,908 Nm)	2,415 ft.lb. (2,908 Nm)	4,158 ft.lb. (5,638 Nm)	4,158 ft.lb. (5,638 Nm)	-	-
@ 3500 psi (24,132 kPa)....	-	2,275 ft.lb. (3,084 Nm)	2,275 ft.lb. (3,084 Nm)	4,410 ft.lb. (5,979 Nm)	4,410 ft.lb. (5,979 Nm)	4,177 ft.lb. (5,664 Nm)	5,291 ft.lb. (7,175 Nm)

Auger Bobcat Excavator Attachment

Part Number	Attachment Description	SLP in US \$
-------------	------------------------	--------------

(322, 323, 324, 325, 328, 425) (E20, E26)

6808799	Model 10 Auger Drive Unit..... \$1,483.00 (If installing on a 322-324 or E20 must order all three of the following: bit, Bolt-On X-Change and X-Change Auger Interface listed below.) (If installing on a 325, 328 or E26 equipped with X-Change, must order bit and X-Change Auger Interface listed below.)	
----------------	--	--

(325, 328, 329, 331, 331E, 334, 335, 337, 341, 425, 430, 435) (E26, E32, E35, E42, E45, E50, E55, E63) (E80, E85)

6809442	Model 15C Auger Drive Unit..... \$1,817.00 (Must order Bit and if installing auger on an X-Change equipped excavator, must also order the interface P/N 6817100 listed below.) (Auger drive unit is shipped with a 7/8" round bit retention pin, if used in conjunction with a hex bit a 5/8" Pin Kit P/N 6809733 is required.)	
----------------	---	--

7145345	Model 15H Hex Shaft Auger Drive Unit..... \$1,817.00 (Must order Bit and if installing auger on an X-Change equipped excavator, must also order the interface P/N 6817100 listed below.)	
----------------	---	--

6809445	Model 30C Auger Drive Unit..... \$2,375.00 (Must order Bit and if installing auger on an X-Change equipped excavator, must also order the interface P/N 6817100 listed below.) (Auger drive unit is shipped with a 7/8" round bit retention pin, if used in conjunction with a hex bit a 5/8" Pin Kit P/N 6809733 is required.)	
----------------	---	--

7138264	Model 30H Hex Shaft Auger Drive Unit..... \$2,375.00 (Must order Bit and if installing auger on an X-Change equipped excavator, must also order the interface P/N 6817100 listed below.)	
----------------	---	--

NOTES:

- 1) Extendable Arm must be pinned in the retracted position to use hydraulic attachments.
- 2) Must order Hose Kit P/N 7214499 (Qty. 2) for E42 Long Arm, E45 long Arm, E50 Long Arm, E55 and E55 Extendable Arm

(E42, E45, E50, E55, E63, E80, E85)

7220280	Model 35PH Auger Drive Unit..... \$3,717.00 (Must order Bit and if installing on an X-Change equipped excavator, must also order the interface P/N 6817100 listed below) (Auger Drive units is shipped with bit retention pin)	
----------------	---	--

7227984	Model 50PH Auger Drive Unit..... \$4,254.00 (Must order Bit and if installing on an X-Change equipped excavator, must also order the interface P/N 6817100 listed below) (Auger Drive units is shipped with bit retention pin)	
----------------	---	--

Part Number	Dealer Installed Accessories - Order From Sales Description	
-------------	---	--

6727180	Bolt-On X-Change, 322 - 324, E20..... \$243.00 (Must also order Bit and PN 6817100)	
----------------	--	--

6817100	X-Change Auger Interface. 322 - 435, E26 - E63..... \$345.00	
----------------	--	--

7169329	Mounting Frame, E80, E85..... \$793.00	
----------------	--	--

7307176	Pin-On Mounting Cap, E85 R-Series..... \$780.00 (Mounting cap uses 55mm pins)	
----------------	--	--

7177964	Hose Kit for R2-Series E42/E50 All Arm Configurations..... Parts \$ ____ (Must order Qty. 2)	
----------------	---	--

7214499	Hose Kit for E42 LA, E45 LA, E50 LA, E55 & E55 EA..... Parts \$ ____ (Must order Qty. 2)	
----------------	---	--

Auger

Bobcat Excavator Attachment

Part Number	Dealer Installed Accessories - Order From Parts Description
-------------	---

For current Dealer Installed Accessories pricing, reference BobQuote or Dealer Parts Department.

Auger Drive & Bit Recommendations

Model 10 Augers on a 322 - 324, E20 Excavator - Recommended bit size 6" - 18"
 Model 10 Augers on a 325/328, E26 Excavators - Recommended bit size 6" - 36"
 Model 15C/H & 30C/H Augers on 325 - 435, E26 - E63 Excavators - Recommended bit size 6" - 36"
 Auger bit combinations should be used as a guideline. Recommendations are based upon average digging conditions.

Light Duty Auger Bits

Used with 322 – 324, E20 and Model 10 Auger
 White, round Drive, 45" Length, Single Flight.

6679574	6" Bit (Ship Weight 45 lbs.)	Parts \$ ____
6679575	9" Bit (Ship Weight 52 lbs.)	Parts \$ ____
6679576	12" Bit (Ship Weight 100 lbs.)	Parts \$ ____
6679577	15" Bit (Ship Weight 120 lbs.)	Parts \$ ____
6679578	18" Bit (Ship Weight 79 lbs.)	Parts \$ ____
6679579	24" Bit (Ship Weight 124 lbs.)	Parts \$ ____
6679580	30" Bit (Ship Weight 144 lbs.)	Parts \$ ____
6679581	36" Bit (Ship Weight 165 lbs.)	Parts \$ ____

Auger Bobcat Excavator Attachment

Part Number	Dealer Installed Accessories - Order From Parts Description
-------------	---

For current Dealer Installed Accessories pricing, reference BobQuote or Dealer Parts Department.

Standard Auger Bits & Accessories

Charcoal Color, Round Drive, 49" Length, Double Flight, Variable Tooth Angle: 40° or 50°

6666891	6" Bit..... (Ship Weight 60 lbs.)	Parts	\$ ____
6666892	9" Bit..... (Ship Weight 91 lbs.)	Parts	\$ ____
6666893	12" Bit..... (Ship Weight 128 lbs.)	Parts	\$ ____
6666894	15" Bit..... (Ship Weight 119 lbs.)	Parts	\$ ____
6666895	18" Bit..... (Ship Weight 160 lbs.)	Parts	\$ ____
6666896	24" Bit..... (Ship Weight 203 lbs.)	Parts	\$ ____
6666897	30" Bit..... (Ship Weight 275 lbs.)	Parts	\$ ____
6666898	36" Bit (Model 15 & 30)..... (Ship Weight 380 lbs.)	Parts	\$ ____
6666899	18" Tree Planting Bit..... (Ship Weight 140 lbs.)	Parts	\$ ____
6666900	24" Tree Planting Bit..... (Ship Weight 162 lbs.)	Parts	\$ ____
6666901	30" Tree Planting Bit..... (Ship Weight 236 lbs.)	Parts	\$ ____
6666902	36" Tree Planting Bit..... (Ship Weight 305 lbs.)	Parts	\$ ____

Standard Auger Bit Accessories

6679806	48" Adjustable Round Extension..... (For Model 10, 15, 15C, 30 and 30C Augers) (6" and 9" bits will not allow the extension to telescope, only works in the top position) (Ship Weight 82 lbs.)	Parts	\$ ____
6679826	24" Adjustable Round Extension..... (For Model 10, 15, 15C, 30 and 30C Augers) (6" and 9" bits will not allow the extension to telescope, only works in the top position) (Ship Weight 44 lbs.)	Parts	\$ ____
6679825	14" Round Extension..... (For Model 10, 15, 15C, 30 and 30C Augers) (Ship Weight 25 lbs.)	Parts	\$ ____

Auger Bobcat Excavator Attachment

Part Number	Dealer Installed Accessories - Order From Parts Description
-------------	---

For current Dealer Installed Accessories pricing, reference BobQuote or Dealer Parts Department.

Heavy Duty Auger Bits & Accessories *Orange Color, Hex Drive, 42" Length, Single Flight*

6674957	6" Bit.....	Parts	\$ ____
	(If installed on a 15C or 30C Auger drive unit, a 5/8" Pin Kit P/N 6809733 is required)(Ship Weight 46 lbs.)		
6674958	9" Bit.....	Parts	\$ ____
	(If installed on a 15C or 30C Auger drive unit, a 5/8" Pin Kit P/N 6809733 is required)(Ship Weight 59 lbs.)		
6674959	12" Bit.....	Parts	\$ ____
	(If installed on a 15C or 30C Auger drive unit, a 5/8" Pin Kit P/N 6809733 is required)(Ship Weight 76 lbs.)		
6674960	16" Bit.....	Parts	\$ ____
	(If installed on a 15C or 30C Auger drive unit, a 5/8" Pin Kit P/N 6809733 is required)(Ship Weight 97 lbs.)		
6675034	18" Bit.....	Parts	\$ ____
	(If installed on a 15C or 30C Auger drive unit, a 5/8" Pin Kit P/N 6809733 is required)		
6674961	20" Bit.....	Parts	\$ ____
	(If installed on a 15C or 30C Auger drive unit, a 5/8" Pin Kit P/N 6809733 is required)(Ship Weight 117 lbs.)		
6674962	24" Bit.....	Parts	\$ ____
	(If installed on a 15C or 30C Auger drive unit, a 5/8" Pin Kit P/N 6809733 is required)(Ship Weight 151 lbs.)		
6674963	30" Bit.....	Parts	\$ ____
	(If installed on a 15C or 30C Auger drive unit, a 5/8" Pin Kit P/N 6809733 is required)(Ship Weight 193 lbs.)		
6674964	36" Bit.....	Parts	\$ ____
	(If installed on a 15C or 30C Auger drive unit, a 5/8" Pin Kit P/N 6809733 is required)(Ship Weight 270 lbs.)		
6674965	42" Bit.....	Parts	\$ ____
	(If installed on a 15C or 30C Auger drive unit, a 5/8" Pin Kit P/N 6809733 is required)(Ship Weight 302 lbs.)		

Heavy Duty Auger Bit Accessories/Rock Auger Bit Accessories

6809733	5/8" (.625) PIN KIT.....	Parts	\$ ____
	(Used for retention of hex bits on 15C and 30C Auger drive units) (Ship Weight 11 lbs.)		
6679807	48" ADJUSTABLE HEX EXTENSION.....	Parts	\$ ____
	(For Model 15H, 15C, 30H and 30C Augers) (Ship Weight 48 lbs.)		
6662876	24" ADJUSTABLE HEX EXTENSION.....	Parts	\$ ____
	(For Model 15H, 15C, 30H and 30C Augers) (Ship Weight 33 lbs.)		
6662874	ROUND SHAFT TO HEX BIT ADAPTER, CAST.....	Parts	\$ ____
	(For Model 15 & 30 Augers with Round Output Shaft) (Ship Weight 19 lbs.)		
6662875	HEX SHAFT TO ROUND BIT ADAPTER, CAST.....	Parts	\$ ____
	(For Model 15H, 15C, 30H and 30C Augers with Hex Output Shaft) (Ship Weight 20 lbs.)		
7137091	HEX SHAFT TO ROUND BIT ADAPTER, SLEEVE.....	Parts	\$ ____
	(For Model 15H, 15C, 30H and 30C Augers with Hex Output Shaft) (5/8" Pin Kit P/N 6809733 is required.)		
	(Sleeve slides over hex shaft, converting it to round) (Ship Weight 3 lbs.)		
7243729	48" ADJUSTABLE HEX EXTENSION.....	Parts	\$ ____
	(For 35PH Auger Drives) (Shipping Weight 105lbs.)		

Auger
Bobcat Excavator Attachment

Part Number	Dealer Installed Accessories - Order From Parts Description
-------------	---

For current Dealer Installed Accessories pricing, reference BobQuote or Dealer Parts Department.

Rock Auger Bits & Accessories
White Color, Hex Shaft, 42" Length, Single Flight

7169665	6" Bit..... (Ship Weight 64 lbs.)	Parts	\$ ____
7169666	9" Bit..... (Ship Weight 78 lbs.)	Parts	\$ ____
7169667	12" Bit..... (Ship Weight 102 lbs.)	Parts	\$ ____
7169668	16" Bit..... (Ship Weight 123 lbs.)	Parts	\$ ____
7169669	18" Bit..... (Ship Weight 149 lbs.)	Parts	\$ ____
7169670	20" Bit..... (Ship Weight 152 lbs.)	Parts	\$ ____
7169671	24" Bit..... (Ship Weight 195 lbs.)	Parts	\$ ____
7169672	30" Bit..... (Ship Weight 225 lbs.)	Parts	\$ ____

Heavy Duty Auger Bits -35/50PH Auger Drive

7243233	8" Bit..... (Ship Weight 115 lbs.)	Parts	\$ ____
7243234	12" Bit..... (Ship Weight 130 lbs.)	Parts	\$ ____
7243235	18" Bit..... (Ship Weight 165 lbs.)	Parts	\$ ____
7243236	24" Bit..... (Ship Weight 225 lbs.)	Parts	\$ ____
7243237	30" Bit..... (Ship Weight 295 lbs.)	Parts	\$ ____
7243238	36" Bit..... (Ship Weight 350 lbs.)	Parts	\$ ____
7243239	48" Bit..... (Ship Weight 495 lbs.)	Parts	\$ ____

Rock Auger Bits -35/50PH Auger Drive

7243240	8" Bit..... (Ship Weight 118 lbs.)	Parts	\$ ____
7243241	12" Bit..... (Ship Weight 130 lbs.)	Parts	\$ ____

Auger
Bobcat Excavator Attachment

7243242	18" Bit (Ship Weight 165 lbs.)	Parts	\$ ____
7243243	24" Bit (Ship Weight 210 lbs.)	Parts	\$ ____
7243244	30" Bit (Ship Weight 300 lbs.)	Parts	\$ ____

Part Number	Dealer Installed Accessories - Order From Parts Description
-------------	---

For current Dealer Installed Accessories pricing, reference BobQuote or Dealer Parts Department.

Non-Current Auger Information

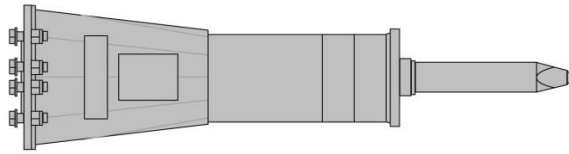
6812766	X-Change Auger Coupler (X-Change Auger Coupler and X-Change Auger Interface P/N 6817100 needed to mount non-current Augers to X-Change equipped excavators.) See Serial Number detail below: Model 15 S/N 187411205 and below Model 15H S/N 187500894 and below	<table border="0" style="width: 100%;"> <tr> <td style="width: 50%; vertical-align: top;">Model 30 S/N 187606002 and below</td> <td style="width: 50%; vertical-align: top;">Model 30H S/N 187700890 and below</td> </tr> </table>	Model 30 S/N 187606002 and below	Model 30H S/N 187700890 and below	Parts	\$ ____
Model 30 S/N 187606002 and below	Model 30H S/N 187700890 and below					
6709662	Pin-On Auger Coupler (Needed to mount Model 15, 15H, 30, and 30H Auger Drives to 325, 328, 331, 331E, 334 and 430 excavators with pin mounting—excavators not equipped with X-Change.) See Serial Number detail below: Model 15 S/N 187411205 and below Model 15H S/N 187500894 and below	<table border="0" style="width: 100%;"> <tr> <td style="width: 50%; vertical-align: top;">Model 30 S/N 187606002 and below</td> <td style="width: 50%; vertical-align: top;">Model 30H S/N 187700890 and below</td> </tr> </table>	Model 30 S/N 187606002 and below	Model 30H S/N 187700890 and below	Parts	\$ ____
Model 30 S/N 187606002 and below	Model 30H S/N 187700890 and below					

Destination Charge/Fuel Surcharge
Refer to BobQuote or BobcatNET>>Other Resources>>Pricing Homepage for current Destination and Fuel Charges

Attachment	Assembly Required	Installation Time (Hrs)
------------	-------------------	-------------------------

Auger..... Assemble drive unit to mounting frame and install bit.....	0.50
---	-------------

Breaker, Hydraulic Bobcat Excavator Attachment



Quick Specs

	<u>HB280</u>	<u>HB680</u>	<u>HB880</u>	<u>HB980</u>
Operating Weight (nail point & X-Change or pin-on cap)	147 lbs.	392 lbs.	542 lbs.	617 lbs.
Impact Energy Class.....	60 ft. lb.	150 ft. lb.	300 ft. lb.	500 ft. lb.
CIMA Tool Energy Rating.....	59 ft. lb.	143 ft. lb.	207 ft. lb.	282 ft. lb.
Blows per Minute.....	1,290 @ 6	1,340 @ 13	1,310 @ 17	1,450 @ 21
	gpm	gpm	gpm	gpm
Flow Requirements.....	3 - 6 gpm	7 - 13 gpm	8 - 17 gpm	12 - 21 gpm
Tool Working Length.....	10.6"	13.0"	13.0"	14.0"
Tool Diameter.....	1.5"	2.2"	2.6"	2.8"
<i>Estimated Breaker Performance with Concrete</i>				
Recommended Working Thickness.....	1 - 4"	2 - 4"	4 - 10"	6 - 14"
<i>Demolished Volume per Hour</i>				
Non-Reinforced Concrete.....	1 - 2 cu. yds.	1 - 4 cu. yds.	4 - 12 cu. yds.	5 - 15 cu. yds.
Reinforced Concrete.....	1 - 2 cu. yds.	1 - 3 cu. yds.	1 - 4 cu. yds.	2 - 6 cu. yds.
	<u>HB1180</u>	<u>HB1380</u>	<u>HB2380</u>	
Operating Weight (nail point & X-Change or pin-on cap)	774 lbs.	1,000 lbs.	1,039 lbs.	
Impact Energy Class.....	750 ft. lb.	850 ft. lb.	1,000 ft. lb.	
CIMA Tool Energy Rating.....	384 ft. lb.	515 ft. lb.	700 ft. lb.	
Blows per Minute.....	1,280 @ 26	1,230 @ 32	910 @ 33	
	gpm	gpm	gpm	
Flow Requirements.....	15 - 26 gpm	17 - 32 gpm	20 - 33 gpm	
Tool Working Length.....	16.0"	17.0"	18.0"	
Tool Diameter.....	3.0"	3.4"	3.8"	
<i>Estimated Breaker Performance with Concrete</i>				
Recommended Working Thickness.....	8 - 16"	10 - 18"	12 - 20"	
<i>Demolished Volume per Hour</i>				
Non-Reinforced Concrete.....	6 - 15 cu. yds.	8 - 18 cu. yds.	10 - 20 cu. yds.	
Reinforced Concrete.....	2 - 7 cu. yds.	3 - 8 cu. yds.	4 - 9 cu. yds.	

**Breaker, Hydraulic
 Bobcat Excavator Attachment**

Part Number	Attachment Description	SLP in US \$
-------------	------------------------	--------------

(E10, 418) 7133202	HB280 Breaker (Includes Nail Point, gauge tool, retainer clip and hose protector) (Must also order hose kit and mounting cap) (If used on 316 excavator, must also order temperature warning kit p/n 7140103 and coupler kit p/n 7170567)	\$4,765.00
-----------------------	--	-------------------

Part Number	Dealer Installed Accessories - Order From Sales Description	SLP in US \$
-------------	---	--------------

Accessories - HB280

7170566	Hose Kit for 316 & 418.....	\$189.00
7160677	Pin-On Mounting Cap - 418.....	\$95.00

Part Number	Dealer Installed Accessories - Order From Parts Description	
-------------	---	--

For current Dealer Installed Accessories pricing, reference BobQuote or Dealer Parts Department.

7133409	Pin-On Mounting Cap - 316 (If machine bucket pins have a round head, order square head pins p/n NTS 3-51110, qty 2)	Parts	\$ ____
7170567	Coupler Kit for 316	Parts	\$ ____
7140103	Temperature Warning Kit (Required when operating breaker with 316 excavator)	Parts	\$ ____

Breaker Tools - HB280

7144652	Blunt.....	Parts	\$ ____
7144649	Cross Cut Chisel.....	Parts	\$ ____
7144650	In-Line Chisel.....	Parts	\$ ____
7144651	Nail Point.....	Parts	\$ ____

Breaker, Hydraulic Bobcat Excavator Attachment

Part Number	Description	Attachment	SLP in US \$
(322, 323, 325, 328, 425) (E20, E26)			
7113419	HB680 Breaker		\$4,655.00
	(Includes Nail Point, fixing cap bolts, cradle, isolation mount, gauge tool, retainer clip and hose protector) (Must also order Mounting Cap and Hose Kit)		

Part Number	Description	Dealer Installed Accessories - Order From Sales	SLP in US \$
<u>Mounting Frames - HB680</u>			
7117752	Pin-On Mounting Cap - E20		\$294.00
	(Must also order appropriate hose kit, P/N 7117823 or 7117832)		
7113656	X-Change Mounting Cap - 325, 328, 425, E26		\$483.00
	(Must also order appropriate hose kit, P/N 7117823 or 7117832)		
<u>Accessories - HB680</u>			
7117832	Hose Kit - E20 Long Arm		\$205.00
	(Includes hoses and quick couplers)		
7117823	Hose Kit - E26		\$205.00
	(Includes hoses and quick couplers)		
7114762	Hose Kit - E26 Long Arm		\$201.00
	(Includes hoses and quick couplers)		

Part Number	Description	Dealer Installed Accessories - Order From Parts
<u>For current Dealer Installed Accessories pricing, reference BobQuote or Dealer Parts Department.</u>		

Breaker Tools - HB680

7144681	Blunt	Parts	\$ _____
7144676	Conical Point (MOIL)	Parts	\$ _____
7144679	Cross Cut Asphalt	Parts	\$ _____
7144673	Cross Cut Chisel	Parts	\$ _____
7144677	Cross Cut Wide Chisel	Parts	\$ _____
7144680	In-Line Asphalt	Parts	\$ _____
7144674	In-Line Chisel	Parts	\$ _____
7144678	In-Line Wide Chisel	Parts	\$ _____
7149302	Nail Point	Parts	\$ _____
7144682	Tamping	Parts	\$ _____

Breaker, Hydraulic Bobcat Excavator Attachment

Part Number	Attachment Description	SLP in US \$
-------------	------------------------	--------------

(325, 328, 329, 331, 331E, 334, 425, 430) (E26, E32, E35)

7113420	HB880 Breaker (Includes Nail Point, fixing cap bolts, cradle, isolation mount, gauge tool, retainer clip and hose protector) (Must also order X-Change Mounting Cap and Hose Kit) (Must also order Auxiliary Hydraulics p/n 7126596 if using with 329 excavator) Approved for use with E60 s/n AGSZ11320 & below	\$6,594.00
---------	---	-------------------

NOTE: Extendable Arm must be pinned in the retracted position to use hydraulic attachments.

Part Number	Dealer Installed Accessories - Order From Sales Description	SLP in US \$
-------------	---	--------------

Mounting Frames - HB880

7113657	X-Change Mounting Cap (Must also order a hose kit)	\$499.00
---------	--	-----------------

Accessories - HB880

7117834	Hose Kit - 325, 329, 331, 331E, 425, 430 Extendable Arm (Includes hoses and quick couplers)	\$205.00
6728963	Hose Kit - E32, E35 (Includes hoses and quick couplers)	\$205.00
7114762	Hose Kit - E26 Long Arm (Includes hoses and quick couplers)	\$201.00
7180019	Hose Kit - E32 Long Arm, E35 Long Arm (Includes hoses and quick couplers)	\$247.00

Part Number	Dealer Installed Accessories - Order From Parts Description
-------------	---

For current Dealer Installed Accessories pricing, reference BobQuote or Dealer Parts Department.

Breaker Tools - HB880

7144696	Blunt	Parts	\$ ____
7144691	Conical Point (MOIL)	Parts	\$ ____
7144694	Cross Cut Asphalt	Parts	\$ ____
7144688	Cross Cut Chisel	Parts	\$ ____
7144692	Cross Cut Wide Chisel	Parts	\$ ____
7144695	In-Line Asphalt	Parts	\$ ____
7144689	In-Line Chisel	Parts	\$ ____
7144693	In-Line Wide Chisel	Parts	\$ ____
7144690	Nail Point	Parts	\$ ____
7144697	Tamping	Parts	\$ ____

**Breaker, Hydraulic
 Bobcat Excavator Attachment**

Part Number	Attachment Description	SLP in US \$
-------------	------------------------	--------------

(329, 331, 331E, 334, 335, 337, 341, 430, 435) (E32, E35, E42, E45, E50, E55)

7113421	HB980 Breaker (Includes Nail Point, fixing cap bolts, cradle, isolation mount, gauge tool, retainer clip and hose protector) (Must also order X-Change Mounting Cap and Hose Kit) (Must also order Auxiliary Hydraulics p/n 7126596 if using with 329 excavator) Approved for use with E60 s/n AGSZ11320 & below	\$8,260.00
---------	---	-------------------

NOTE: Extendable Arm must be pinned in the retracted position to use hydraulic attachments.

Part Number	Dealer Installed Accessories - Order From Sales Description	SLP in US \$
-------------	---	--------------

Mounting Frames - HB980

7113657	X-Change Mounting Cap (Must also order a hose kit)	\$499.00
---------	--	----------

Accessories - HB980

7117834	Hose Kit - 325, 329, 331, 331E, 425, 430, 430 Extendable Arm (Includes hoses and quick couplers)	\$205.00
6728967	Hose Kit - E50 WITH LONG ARM; E55 - All ARMS (Includes hoses and quick couplers)	\$205.00
6728963	Hose Kit - E32, E35 (Includes hoses and quick couplers)	\$205.00
7180019	Hose Kit - E32, E35, E42, E45 - ALL WITH LONG ARM (Includes hoses and quick couplers)	\$247.00
7114762	Hose Kit - E42, E45, E50 (Includes hoses and quick couplers)	\$201.00
7175244	Hose Kit - R2-Series E42/E50 All Arm Configurations (Includes hoses and quick couplers)	\$233.00

Part Number	Dealer Installed Accessories - Order From Parts Description
-------------	---

For current Dealer Installed Accessories pricing, reference BobQuote or Dealer Parts Department.

Breaker Tools - HB980

7144707	Blunt	Parts	\$ ____
7144702	Conical Point (MOIL)	Parts	\$ ____
7144705	Cross Cut Asphalt	Parts	\$ ____
7144699	Cross Cut Chisel	Parts	\$ ____
7144703	Cross Cut Wide Chisel	Parts	\$ ____
7144706	In-Line Asphalt	Parts	\$ ____
7144700	In-Line Chisel	Parts	\$ ____
7144704	In-Line Wide Chisel	Parts	\$ ____
7144701	Nail Point	Parts	\$ ____
7144708	Tamping	Parts	\$ ____

Breaker, Hydraulic Bobcat Excavator Attachment

Part Number	Attachment Description	SLP in US \$
-------------	------------------------	--------------

(335, 337, 341, 435, 442) (E42, E45, E50, E55, E60*, E63, E80, E85)		
7115923	HB1180 Breaker.....	\$10,860.00
	(Includes Nail Point, fixing cap bolts, cradle, isolation mount, gauge tool, retainer clip and hose protector) (Must also order X-Change Mounting Cap and Hose Kit)	
	* Approved for use with E60 s/n AGSZ11321 & above	

Part Number	Dealer Installed Accessories - Order From Sales Description	SLP in US \$
-------------	---	--------------

<u>Mounting Frames - HB1180</u>		
(335, 337, 341, 435) (E42, E45, E50, E55, E60, E63)		
7117325	X-Change Mounting Cap..... (Must also order a hose kit)	\$583.00
(E80, E85)		
7168502	Pin-On Mounting Cap..... (Must also order hose kit, P/N 7176608, Mounting Cap uses 45mm pins)	\$757.00
(E85 R-Series)		
7307177	Pin-On Mounting Cap..... (Must also order hose kit, P/N 7176608, Mounting Cap uses 55mm pins)	\$746.00

<u>Accessories - HB1180</u>		
7175244	Hose Kit - R2-Series E42/E50 All Arm Configurations..... (Includes hoses and quick couplers)	\$233.00
7114762	Hose Kit - E42, E45, E50.....	\$201.00
6728967	Hose Kit - E50 WITH LONG ARM; E55 - All ARMS.....	\$205.00
7130290	Hose Kit - 442.....	\$249.00
7180019	Hose Kit - E42, E45 - ALL WITH LONG ARM.....	\$247.00
7176608	Hose Kit - E60, E63, E80, E85.....	\$289.00

Part Number	Dealer Installed Accessories - Order From Parts Description	
-------------	---	--

For current Dealer Installed Accessories pricing, reference BobQuote or Dealer Parts Department.

(442)		
6681919	Pin-On Mounting Cap..... (Must also order hose kit, P/N 7130290)	\$ ____

<u>Breaker Tools - HB1180</u>		
7144718	Blunt.....	Parts \$ ____
7144713	Conical Point (MOIL).....	Parts \$ ____
7144716	Cross Cut Asphalt.....	Parts \$ ____
7144710	Cross Cut Chisel.....	Parts \$ ____
7144714	Cross Cut Wide Chisel.....	Parts \$ ____
7144717	In-Line Asphalt.....	Parts \$ ____
7144711	In-Line Chisel.....	Parts \$ ____
7144712	Nail Point.....	Parts \$ ____
7144719	Tamping.....	Parts \$ ____
7144715	In-Line Wide Chisel.....	Parts \$ ____

Breaker, Hydraulic Bobcat Excavator Attachment

Part Number	Attachment Description	SLP in US \$
-------------	------------------------	--------------

(442) (E60*, E63, E80, E85)		
7157576	HB1380 Breaker	\$13,477.00
	(Includes Nail Point, fixing cap bolts, cradle, isolation mount, gauge tool, retainer clip and hose protector) (Must also order X-Change Mounting Cap/Pin-On Mounting Cap and Hose Kit)	
	* Approved for use with E60 s/n AGSZ11321 & above	

Part Number	Dealer Installed Accessories - Order From Sales Description	SLP in US \$
-------------	---	--------------

Mounting Frames - HB1380

(442)		
7145372	Pin-On Mounting Cap	\$641.00
	(Must also order hose kit, P/N 7130290)	
(E60, E63)		
7117325	X-Change Mounting Cap	\$583.00
	(Must also order a hose kit, P/N 7176608)	
(E80, E85)		
7168502	Pin-On Mounting Cap	\$757.00
	(Must also order hose kit, P/N 7176608, Mounting Cap uses 45mm pins)	
(E85 R-Series)		
7307177	Pin-On Mounting Cap	\$746.00
	(Must also order hose kit, P/N 7176608, Mounting Cap uses 55mm pins)	

Accessories - HB1380

7130290	Hose Kit - 442	\$249.00
	(Includes hoses and quick couplers)	
7176608	Hose Kit - E60, E63, E80, E85	\$289.00
	(Includes hoses and quick couplers)	

Part Number	Dealer Installed Accessories - Order From Parts Description
-------------	---

For current Dealer Installed Accessories pricing, reference BobQuote or Dealer Parts Department.

Breaker Tools - HB1380

7163375	Blunt	Parts	\$ _____
7163370	Conical Point (MOIL)	Parts	\$ _____
7163373	Cross Cut Asphalt	Parts	\$ _____
7163367	Cross Cut Chisel	Parts	\$ _____
7163371	Cross Cut Wide Chisel	Parts	\$ _____
7163374	In-Line Asphalt	Parts	\$ _____
7163368	In-Line Chisel	Parts	\$ _____
7163369	Nail Point	Parts	\$ _____
7163372	Wide Chisel	Parts	\$ _____

**Breaker, Hydraulic
 Bobcat Excavator Attachment**

Part Number	Description	Attachment	SLP in US \$
-------------	-------------	------------	--------------

(442) (E80, E85) 7133203	HB2380 Breaker (Includes Nail Point, fixing cap bolts, cradle, isolation mount, and hose protector) (Must also order Pin-On Mounting Cap and Hose Kit)		\$16,561.00
-----------------------------	--	--	--------------------

Part Number	Description	Dealer Installed Accessories - Order From Sales	SLP in US \$
-------------	-------------	---	--------------

Mounting Frames - HB2380

(442) 7145372	Pin-On Mounting Cap (Must also order hose kit, P/N 7130290)		\$641.00
(E80, E85) 7168502	Pin-On Mounting Cap (Must also order hose kit, P/N 7176608, Mounting Cap uses 45mm pins)		\$757.00
(E85 R-Series) 7307177	Pin-On Mounting Cap (Must also order hose kit, P/N 7176608, Mounting Cap uses 55mm pins)		\$746.00

Accessories - HB2380

7141851	Auto-Grease Kit		\$1,939.00
7130290	Hose Kit - 442 (Includes hoses and quick couplers)		\$249.00
7176608	Hose Kit - E80, E85 (Includes hoses and quick couplers)		\$289.00

Part Number	Description	Dealer Installed Accessories - Order From Parts
-------------	-------------	---

For current Dealer Installed Accessories pricing, reference BobQuote or Dealer Parts Department.

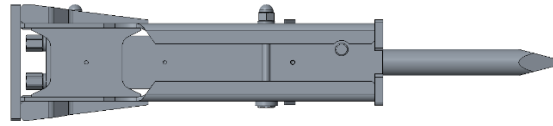
Breaker Tools - HB2380

7144728	Blunt	Parts	\$ ____
7144723	Conical Point (MOIL)	Parts	\$ ____
7144726	Cross Cut Asphalt	Parts	\$ ____
7144720	Cross Cut Chisel	Parts	\$ ____
7144724	Cross Cut Wide Chisel	Parts	\$ ____
7144727	In-Line Asphalt	Parts	\$ ____
7144721	In-Line Chisel	Parts	\$ ____
7144722	Nail Point	Parts	\$ ____
7144725	Wide Chisel	Parts	\$ ____

Destination Charge/Fuel Surcharge
Refer to BobQuote or BobcatNET >> Other Resources >> Pricing Homepage for current Destination and Fuel Charges

Attachment	Assembly Required	Installation Time (Hrs)
Breaker.....	None.....	-
HB280.....	Install temperature alarm on 316.....	1.5
HB1380.....	Install grease kit on HB1380.....	1.0
HB2380.....	Install grease kit on HB2380.....	1.0

Breaker, Nitrogen Bobcat Excavator Attachment



Quick Specs

	<u>NB110</u>	<u>NB140</u>	<u>NB150</u>
Operating Weight (nail point & X-Change or pin-on cap)	160 lbs.	419 lbs.	556 lbs.
Impact Energy Class.....	150 ft. lb.	350 ft. lb.	550 ft. lb.
AEM Tool Energy Rating.....	81 ft. lb.	243 ft. lb.	303 ft. lb.
Blows per Minute.....	1,300 @ 7.9 gpm	1,022 @ 13.2 gpm	1,075 @ 20.4 gpm
Flow Requirements.....	3 - 8 gpm	7 - 13 gpm	13 - 20 gpm
Tool Working Length.....	11.2"	14.6"	13.0"
Tool Diameter.....	1.7"	2.2"	2.6"
<i>Estimated Breaker Performance with Concrete</i>			
Recommended Working Thickness.....	1 - 5"	4 - 12"	6 - 15"
<i>Demolished Volume per Hour</i>			
Non-Reinforced Concrete.....	1 - 3 cu. yds.	1 - 4 cu. yds.	4 - 15 cu. yds.
Reinforced Concrete.....	1 - 3 cu. yds.	1 - 4 cu. yds.	1 - 6 cu. yds.
	<u>NB160</u>	<u>NB170</u>	<u>NB180</u>
Operating Weight (nail point & X-Change or pin-on cap)	773 lbs.	1,146 lbs.	1,251 lbs.
Impact Energy Class.....	900 ft. lb.	1,200 ft. lb.	1,500 ft. lb.
AEM Tool Energy Rating.....	592 ft. lb.	759 ft. lb.	996 ft. lb.
Blows per Minute.....	979 @ 23.3 gpm	965 @ 21.9 gpm	1,000 @ 29 gpm
Flow Requirements.....	13 - 24 gpm	11 - 24 gpm	15 - 30 gpm
Tool Working Length.....	18.4"	21.9"	22.7"
Tool Diameter.....	2.8"	3.2"	3.7"
<i>Estimated Breaker Performance with Concrete</i>			
Recommended Working Thickness.....	10 - 20"	12 - 22"	14 - 24"
<i>Demolished Volume per Hour</i>			
Non-Reinforced Concrete.....	6 - 20 cu. yds.	8 - 20 cu. yds.	11 - 25 cu. yds.
Reinforced Concrete.....	3 - 8 cu. yds.	4 - 10 cu. yds.	5 - 16 cu. yds.

**Breaker, Nitrogen
 Bobcat Excavator Attachment**

Part Number	Description	Attachment	SLP in US \$
(E10, 418) 7355660	NB110 Breaker		\$3,756.00
	(Includes Nail Point) (Must also order hose kit and mounting cap)		
	(If used on 316 excavator, must also order temperature warning kit p/n 7140103 and coupler kit p/n 7170567)		

Part Number	Description	Dealer Installed Accessories - Order From Sales	SLP in US \$
<i><u>Accessories - NB110</u></i>			
7170566	Hose Kit for 316 & 418		\$189.00
7160677	Pin-On Mounting Cap - 418		\$95.00

Part Number	Description	Dealer Installed Accessories - Order From Parts	
<u>For current Dealer Installed Accessories pricing, reference BobQuote or Dealer Parts Department.</u>			
7133409	Pin-On Mounting Cap - 316		Parts \$ ____
	(If machine bucket pins have a round head, order square head pins p/n NTS 3-51110, qty 2)		
7170567	Coupler Kit for 316		Parts \$ ____
7140103	Temperature Warning Kit		Parts \$ ____
	(Required when operating breaker with 316 excavator)		

<i><u>Breaker Tools - NB110</u></i>			
7357284	Cross Cut Chisel		Parts \$ ____
7357283	In-Line Chisel		Parts \$ ____
7357282	Nail Point		Parts \$ ____

**Breaker, Nitrogen
 Bobcat Excavator Attachment**

Part Number	Description	Attachment	SLP in US \$
(E20, E26) 7355666	NB140 Breaker (Includes Nail Point, fixing cap bolts) (Must also order Mounting Cap and Hose Kit)		\$3,669.00

Part Number	Description	Dealer Installed Accessories - Order From Sales	SLP in US \$
<u>Mounting Frames - NB140</u>			
7117752	Pin-On Mounting Cap - E20 (Must also order appropriate hose kit, P/N 7117823 or 7117832)		\$294.00
7113656	X-Change Mounting Cap - E26 (Must also order appropriate hose kit, P/N 7117823)		\$483.00
<u>Accessories - NB140</u>			
7117832	Hose Kit - E20 Long Arm (Includes hoses and quick couplers)		\$205.00
7117823	Hose Kit - E26 (Includes hoses and quick couplers)		\$205.00
7114762	Hose Kit - E26 Long Arm (Includes hoses and quick couplers)		\$201.00

Part Number	Description	Dealer Installed Accessories - Order From Parts
-------------	-------------	---

For current Dealer Installed Accessories pricing, reference BobQuote or Dealer Parts Department.

Breaker Tools - NB140

7357286	Conical Point (MOIL).....	Parts	\$ _____
7357288	Cross Cut Chisel.....	Parts	\$ _____
7357287	In-Line Chisel.....	Parts	\$ _____
7357285	Nail Point.....	Parts	\$ _____

**Breaker, Nitrogen
 Bobcat Excavator Attachment**

Part Number	Attachment Description	SLP in US \$
-------------	------------------------	--------------

(E26, E32, E35)		
7234534	NB150 Breaker	\$4,873.00
	(Includes Nail Point, fixing cap bolts) (Must also order Mounting Cap and Hose Kit)	

NOTE: Extendable Arm must be pinned in the retracted position to use hydraulic attachments.

Part Number	Dealer Installed Accessories - Order From Sales Description	SLP in US \$
-------------	---	--------------

Mounting Frames - NB150

7113657	X-Change Mounting Cap (Must also order a hose kit)	\$499.00
---------	--	-----------------

Accessories - NB150

7114762	Hose Kit - E26 Long Arm (Includes hoses and quick couplers)	\$201.00
6728963	Hose Kit - E32, E35 (Includes hoses and quick couplers)	\$205.00
7180019	Hose Kit - E32 Long Arm, E35 Long Arm (Includes hoses and quick couplers)	\$247.00

Part Number	Dealer Installed Accessories - Order From Parts Description
-------------	---

For current Dealer Installed Accessories pricing, reference BobQuote or Dealer Parts Department.

Breaker Tools - NB150

7357294	Blunt	Parts	\$ ____
7357291	Conical Point (MOIL)	Parts	\$ ____
7357923	Cross Cut Chisel	Parts	\$ ____
7357292	In-Line Chisel	Parts	\$ ____
7357290	Nail Point	Parts	\$ ____

Breaker, Hydraulic Bobcat Excavator Attachment

Part Number	Description	Attachment	SLP in US \$
-------------	-------------	------------	--------------

(E32, E35, E42, E45, E50, E55)

7234536 **NB160 Breaker**..... **\$6,104.00**

(Includes Nail Point, fixing cap bolts) (Must also order Mounting Cap and Hose Kit)

NOTE: **Extendable Arm must be pinned in the retracted position to use hydraulic attachments.**

Part Number	Description	Dealer Installed Accessories - Order From Sales	SLP in US \$
-------------	-------------	---	--------------

Mounting Frames - NB160

7113657 **X-Change Mounting Cap**..... **\$499.00**
 (Must also order a hose kit)

Accessories - NB160

7175244 **Hose Kit - R2-Series E42/E50 All Arm Configurations**..... **\$233.00**
 (Includes hoses and quick couplers)

6728967 **Hose Kit - E50 WITH LONG ARM; E55 - All ARMS**..... **\$205.00**
 (Includes hoses and quick couplers)

6728963 **Hose Kit - E32, E35**..... **\$205.00**
 (Includes hoses and quick couplers)

7180019 **Hose Kit - E32, E35, E42, E45 - ALL WITH LONG ARM**..... **\$247.00**
 (Includes hoses and quick couplers)

7114762 **Hose Kit - E42, E45, E50**..... **\$201.00**
 (Includes hoses and quick couplers)

Part Number	Description	Dealer Installed Accessories - Order From Parts
-------------	-------------	---

For current Dealer Installed Accessories pricing, reference BobQuote or Dealer Parts Department.

Breaker Tools - NB160

7357299	Blunt.....	Parts	\$ ____
7357298	Conical Point (MOIL).....	Parts	\$ ____
7357295	Cross Cut Chisel.....	Parts	\$ ____
7357302	In-Line Chisel.....	Parts	\$ ____
7357297	Nail Point.....	Parts	\$ ____

Breaker, Nitrogen Bobcat Excavator Attachment

Part Number	Description	Attachment	SLP in US \$
(E63, E80, E85) 7355672	NB170 Breaker		\$9,294.00
	(Includes Nail Point, fixing cap bolts) (Must also order Mounting Cap and Hose Kit)		

Part Number	Description	Dealer Installed Accessories - Order From Sales	SLP in US \$
<u>Mounting Frames - NB170</u>			
(E63) 7117325	X-Change Mounting Cap		\$583.00
	(Must also order a hose kit, P/N 7176608)		
(E80, E85) 7168502	Pin-On Mounting Cap		\$757.00
	(Must also order hose kit, P/N 7176608, Mounting Cap uses 45mm pins)		
(E85 R-Series) 7307177	Pin-On Mounting Cap		\$746.00
	(Must also order hose kit, P/N 7176608, Mounting Cap uses 55mm pins)		
<u>Accessories - NB170</u>			
7176608	Hose Kit - E60, E63, E80, E85		\$289.00
	(Includes hoses and quick couplers)		

Part Number	Description	Dealer Installed Accessories - Order From Parts
<u>For current Dealer Installed Accessories pricing, reference BobQuote or Dealer Parts Department.</u>		

<u>Breaker Tools - NB170</u>			
7357306	Conical Point (MOIL)	Parts	\$ ____
7357303	Cross Cut Chisel	Parts	\$ ____
7357302	In-Line Chisel	Parts	\$ ____
7357300	Nail Point	Parts	\$ ____

**Breaker, Nitrogen
 Bobcat Excavator Attachment**

Part Number	Description	Attachment	SLP in US \$
(E80, E85) 7355674	NB180 Breaker (Includes Nail Point, fixing cap bolts, cradle, isolation mount, and hose protector) (Must also order Pin-On Mounting Cap and Hose Kit)		\$10,605.00

Part Number	Description	Dealer Installed Accessories - Order From Sales	SLP in US \$
-------------	-------------	---	--------------

Mounting Frames - NB180

(E85) 7168502	Pin-On Mounting Cap (Must also order hose kit, P/N 7176608, Mounting Cap uses 45mm pins)		\$757.00
(E85 R-Series) 7307177	Pin-On Mounting Cap (Must also order hose kit, P/N 7176608, Mounting Cap uses 55mm pins)		\$746.00

Accessories - NB180

7176608	Hose Kit - E80, E85 (Includes hoses and quick couplers)		\$289.00
---------	---	--	-----------------

Part Number	Description	Dealer Installed Accessories - Order From Parts
-------------	-------------	---

For current Dealer Installed Accessories pricing, reference BobQuote or Dealer Parts Department.

Breaker Tools - NB180

7357306	Conical Point (MOIL)	Parts	\$ ____
7357308	Cross Cut Chisel	Parts	\$ ____
7357307	In-Line Chisel	Parts	\$ ____
7357305	Nail Point	Parts	\$ ____

Destination Charge/Fuel Surcharge

Refer to BobQuote or BobcatNET>>Other Resources>>Pricing Homepage for current Destination and Fuel Charges

Attachment	Assembly Required	Installation Time (Hrs)
------------	-------------------	-------------------------

Breaker	None	-
NB110	Install temperature alarm on 316	1.5

Bucket
Bobcat Excavator Attachments

Part Number	Attachment Description	ISO Heaped Capacity (FT ³)	Ship. WGT.	SLP IN US \$
-------------	------------------------	--	------------	--------------

Buckets & Grading Blade Current

Class 0 Buckets

(418 Pin-On Style) (E10)

7157626	8" Trenching Bucket with Teeth.....	0.31	29	\$399.00
7140493	12" Trenching Bucket with Teeth.....	0.54	37	\$437.00
7140489	16" Trenching Bucket with Teeth.....	0.79	43	\$452.00
7150275	31" Grading Bucket, Smooth Lip.....	1.5	58	\$542.00

Class I Buckets

(320, 322, 323, 324 Pin-On Style) (E20)

6715495	9" Trenching Bucket, 2 Bolt-On Teeth.....	0.5	53	\$442.00
6715496	12" Trenching Bucket, 3 Bolt-On Teeth.....	0.7	63	\$489.00
6715497	16" Trenching Bucket, 3 Bolt-On Teeth.....	1.1	75	\$536.00
7109522	18" Trenching Bucket, 4 Bolt-On-Teeth.....	1.3	90	\$552.00
6715498	20" Trenching Bucket, 4 Bolt-On Teeth.....	1.4	85	\$583.00
6715499	39" Grading Bucket, Smooth Lip.....	3.1	146	\$615.00

Class II Buckets

(325, 328, 425 X-Change™ Style) (E26)

*Class II includes weld-on shank with replaceable teeth

*Class II Smooth Lip includes Bolt On Cutting Edge

7333229	12" Trenching Bucket, Smooth Lip..... (Not compatible with hydraulic clamp)	1.33	167	\$683.00
7333230	12" Trenching Bucket, 3 Weld-On Shanks..... (Not compatible with hydraulic clamp)	1.33	173	\$683.00
7333244	16" Trenching Bucket, Smooth Lip.....	1.92	192	\$715.00
7333245	16" Trenching Bucket, 4 Weld-On Shanks.....	1.92	195	\$715.00
7333254	20" Trenching Bucket, Smooth Lip.....	2.53	226	\$761.00
7333255	20" Trenching Bucket, 4 Weld-On Shanks.....	2.53	230	\$761.00
7333259	24" Trenching Bucket, Smooth Lip.....	3.14	254	\$830.00
7333260	24" Trenching Bucket, 4 Weld-On Shanks.....	3.14	255	\$830.00
7333978	36" Grading Bucket, Bolt On Cutting Edge.....	5.19	279	\$1,062.00
7333979	48" Grading Bucket, Bolt On Cutting Edge.....	7.12	328	\$1,284.00

NOTE: THESE BUCKETS ARE THE SAME BUCKETS AS USED WITH THE 607 BACKHOES.

6817096	55" Grading Blade.....	N/A	320	\$814.00
---------	------------------------	-----	-----	----------

Bucket
Bobcat Excavator Attachments

Part Number	Attachment Description	ISO Heaped Capacity (FT ³)	Ship. WGT.	SLP IN US \$
----------------	---------------------------	---	---------------	--------------

Buckets & Grading Blade Current

Class III Buckets

(329, 331, 331E, 334, 430 X-Change™ Style) (E32, E35)

*Class III includes weld-on shank with replaceable teeth

*Class III Smooth Lip includes Bolt On Cutting Edge

7323832	12" Trenching Bucket, Smooth Lip.....	1.6	178	\$914.00
7323833	12" Trenching Bucket, 3 Weld-On Shanks.....	1.6	184	\$914.00
7324829	16" Trenching Bucket, Smooth Lip.....	2.31	206	\$940.00
7324830	16" Trenching Bucket, 4 Weld-On Shanks.....	2.31	208	\$940.00
7323841	18" Trenching Bucket, Smooth Lip.....	2.68	226	\$1,030.00
7323842	18" Trenching Bucket, 4 Weld-On Shanks.....	2.68	231	\$1,030.00
7323820	20" Trenching Bucket, Smooth Lip.....	3.05	241	\$1,073.00
7323821	20" Trenching Bucket, 4 Weld-On Shanks.....	3.05	244	\$1,073.00
7323529	24" Trenching Bucket, Smooth Lip.....	3.8	238	\$1,109.00
7323530	24" Trenching Bucket, 4 Weld-On Shanks.....	3.8	274	\$1,109.00
7323822	30" Trenching Bucket, Smooth Lip.....	4.91	319	\$1,235.00
7323823	30" Trenching Bucket, 5-Weld-On Shanks.....	4.91	325	\$1,235.00
7323824	36" Trenching Bucket, Smooth Lip.....	6.02	365	\$1,345.00
7323825	36" Trenching Bucket, 6 Weld-On Shanks.....	6.02	365	\$1,345.00
7333978	36" Grading Bucket, Bolt On Cutting Edge.....	5.19	279	\$1,062.00
7333979	48" Grading Bucket, Bolt On Cutting Edge.....	7.12	328	\$1,284.00

NOTE: THESE BUCKETS ARE THE SAME BUCKETS AS USED WITH THE 709, 8709, 811 & 8811 BACKHOES.

6817096	55" Grading Blade.....	N/A	320	\$814.00
---------	------------------------	-----	-----	----------

Class III Buckets

(E42 "Standard" Buckets)

*Class III includes weld-on shank with replaceable teeth

*Class III Smooth Lip includes Bolt On Cutting Edge

7323832	12" Trenching Bucket, Smooth Lip.....	1.6	178	\$914.00
7323833	12" Trenching Bucket, 3 Weld-On Shanks.....	1.6	184	\$914.00
7324829	16" Trenching Bucket, Smooth Lip.....	2.31	206	\$940.00
7324830	16" Trenching Bucket, 4 Weld-On Shanks.....	2.31	208	\$940.00
7323841	18" Trenching Bucket, Smooth Lip.....	2.68	226	\$1,030.00
7323842	18" Trenching Bucket, 4 Weld-On Shanks.....	2.68	231	\$1,030.00
7323529	24" Trenching Bucket, Smooth Lip.....	3.8	238	\$1,109.00
7323530	24" Trenching Bucket, 4 Weld-On Shanks.....	3.8	274	\$1,109.00

Bucket

Bobcat Excavator Attachments

Part Number	Attachment Description	ISO Heaped Capacity (FT ³)	Ship. WGT.	SLP IN US \$
----------------	---------------------------	---	---------------	--------------

Class IV Buckets

(335, 337, 341 & 435 X-CHANGE™ STYLE) (E42, E45, E50, E55, E60, E63)

*Class IV includes weld-on shank with replaceable teeth

*Class IV Smooth Lip includes Bolt On Cutting Edge

7321975	12" Trenching Bucket, Smooth Lip.....	2.19	225	\$977.00
7321974	12" Trenching Bucket, 3 Weld-On Shanks.....	2.19	225	\$977.00
7322080	18" Trenching Bucket, Smooth Lip.....	3.69	285	\$1,135.00
7322082	18" Trenching Bucket, 4 Weld-On Shanks.....	3.69	285	\$1,135.00
7311869	24" Trenching Bucket, Smooth Lip.....	5.27	346	\$1,309.00
7311868	24" Trenching Bucket, 4 Weld-On Shanks.....	5.27	341	\$1,309.00
7322087	30" Trenching Bucket, Smooth Lip.....	6.86	404	\$1,476.00
7322088	30" Trenching Bucket, 5-Weld-On Shanks.....	6.86	405	\$1,476.00
7322090	36" Trenching Bucket, Smooth Lip.....	8.46	461	\$1,592.00
7322091	36" Trenching Bucket, 6 Weld-On Shanks.....	8.46	458	\$1,592.00
7333657	36" Grading Bucket, Bolt On Cutting Edge.....	6.33	355	\$1,273.00
7333658	48" Grading Bucket, Bolt On Cutting Edge.....	8.69	444	\$1,564.00
7333659	60" Grading Bucket, Bolt On Cutting Edge.....	11.05	355	\$1,848.00

(APPROVED FOR 335, 337, 341, & 435 X-CHANGE STYLE. NOT APPROVED FOR E42-E63)

6817096	55" Grading Blade.....	N/A	320	\$814.00
---------	------------------------	-----	-----	----------

Class V Buckets

(E55, E63)

*Class V includes weld-on shank with replaceable teeth

*Class V Smooth Lip includes Bolt On Cutting Edge

7333363	18" Trenching Bucket, Smooth Lip.....	4.36	335	\$1,174.00
7333364	18" Trenching Bucket, 4 Weld-On Shanks.....	4.36	332	\$1,174.00
7333373	24" Trenching Bucket, Smooth Lip.....	6.24	402	\$1,353.00
7333374	24" Trenching Bucket, 4 Weld-On Shanks.....	6.24	383	\$1,353.00
7333378	30" Trenching Bucket, Smooth Lip.....	8.16	465	\$1,525.00
7333379	30" Trenching Bucket, 5-Weld-On Shanks.....	8.16	460	\$1,525.00
7333383	36" Trenching Bucket, Smooth Lip.....	10.09	529	\$1,644.00
7333384	36" Trenching Bucket, 6 Weld-On Shanks.....	10.09	516	\$1,644.00
7333658	48" Grading Bucket, Bolt On Cutting Edge.....	8.69	444	\$1,564.00
7333659	60" Grading Bucket, Bolt On Cutting Edge.....	11.05	355	\$1,848.00

Bucket Bobcat Excavator Attachments

Part Number	Attachment Description	ISO Heaped Capacity (FT ³)	Ship. WGT.	SLP IN US \$
-------------	------------------------	--	------------	--------------

Class VI Buckets

E80, E85 M-SERIES PIN-ON BUCKETS*

(E80, E85) *Not compatible R-Series E85

7171895	18" Trenching Bucket, 3 Weld-On Shanks.....	6.6	342	\$1,177.00
7171893	24" Trenching Bucket, 4 Weld-On Shanks.....	9.5	414	\$1,421.00
7171897	36" Trenching Bucket, 5 Weld-On Shanks.....	15	617	\$1,687.00
7171899	54" Grading Bucket, Smooth Lip.....	14.1	620	\$2,118.00
7171901	48" Tilting Grade Bucket, Smooth Lip.....	12.87	656	\$7,540.00

E85 R-Series Pin-On Buckets*

(E85R) *Not compatible with M-Series E80, E85

7322125	18" Trenching Bucket, 3 Weld-On Shanks.....	5.69	486	\$1,242.00
7322123	24" Trenching Bucket, 4 Weld-On Shanks.....	8.14	561	\$1,421.00
7322126	36" Trenching Bucket, 5 Weld-On Shanks.....	13.27	704	\$1,687.00
7334506	60" Grading Bucket, Bolt On Cutting Edge.....	15.51	668	\$2,118.00

E145 Pin-On Buckets

(E145)

7382549	24" Trenching Bucket, Includes Wear Shrouds.....	11.34	878	\$3,363.00
7382550	36" Trenching Bucket, Includes Wear Shrouds.....	19.17	1147	\$3,871.00
7382551	42" Trenching Bucket, Includes Wear Shrouds.....	22.95	1253	\$4,439.00
7382900	60" Grading Bucket, Smooth Lip.....	37.53	1548	\$4,945.00

442 Pin-On Buckets

(442)

7125310	18" Trenching Bucket, 3 Weld-On Shanks.....	5.2	342	\$1,104.00
7125308	24" Trenching Bucket, 4 Weld-On Shanks.....	7.3	414	\$1,329.00
7125312	36" Trenching Bucket, 5 Weld-On Shanks.....	9.9	617	\$1,592.00
7125306	54" Grading Bucket, Smooth Lip.....	9.5	406	\$2,446.00

Buckets - Non Current

(225, 325 & 328 Pin-On Style)

6534123	24" Trenching Bucket, 5 Bolt-On Teeth.....	2.9	152	\$709.00
---------	--	-----	-----	----------

Part Number	Dealer Installed Accessories - Order From Parts Description
-------------	---

For current Dealer Installed Accessories pricing, reference BobQuote or Dealer Parts Department.

ACCESSORIES FOR ALL CURRENT 325-43, E32, E35 EXCAVATOR BUCKETS

7107317	Hensley Forged Tooth Point (Qty.1).....	Parts	\$ _____
7107320	Hensley Tiger Tooth Point (Qty.1).....	Parts	\$ _____
7107321	Hensley Twin Tiger Tooth Point (Qty.1).....	Parts	\$ _____

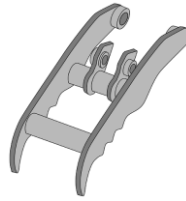
Bucket
Bobcat Excavator Attachments

Destination Charge/Fuel Surcharge
Refer to BobQuote or BobcatNET>>Other Resources>>Pricing Homepage for current Destination and Fuel Charges

Attachment	Assembly Required	Installation Time (Hrs)
------------	-------------------	-------------------------

Bucket.....	None.....	-
-------------	-----------	---

Clamp Bobcat Excavator Attachment



Quick Specs

Hydraulic Clamp

	<u>E20</u>	<u>E26-E35</u>	<u>E42</u>	<u>E42-E63</u>	<u>E85</u>
Operating Weight.....	50 lbs.	126 lbs.	171 lbs.	218 lbs.	449 lbs.
Clamp Width.....	5.5"	13.0"	14.4"	15.0"	16.5"
Tooth Radius	19.8"	27.2"	27.2"	32.0"	41.0"
Tooth Thickness.....	1/2"	3/4"	3/4"	1"	1"
Class.....	I	III	III	IV	V

	<u>322-334</u>	<u>325-430</u>	<u>335-435</u>	<u>442</u>
Operating Weight.....	70 lbs.	176 lbs.	299 lbs.	265 lbs.
Clamp Width.....	5.5"	13.0"	14.4"	16.0"
Tooth Radius	21.5"	27.2"	30.7"	31.3"
Tooth Thickness.....	1/2"	3/4"	1"	1"
Class.....	I	III	IV	V

Pro Clamp™ System

	<u>E32i-E3</u>	<u>E42-E55</u>
Operating Weight.....	121 lbs.	215 lbs.
Clamp Width.....	12"	14"
Class.....	III	IV

Clamp Bobcat Excavator Attachment

Part Number	Attachment	SLP IN US \$
-------------	------------	--------------

Hydraulic Clamp is NOT recommended in combination with Hydraulic Breakers

(E20) 7258209	Hydraulic Clamp (Includes Clamp, cylinder, hoses, hose bracket, & pins) (Hydraulic Clamp is NOT recommended in combination with Hydraulic Breakers)	\$1,050.00
(322, 323, 324) 7110207	Hydraulic Clamp (Includes Clamp, cylinder, port relief, cylinder bracket, hoses & pins) (Use with a Trenching Bucket) (Hydraulic Clamp is NOT recommended in combination with Hydraulic Breakers)	\$1,100.00
(325*, 328, 329, 331*, 334, 425, 430) CLASS II/III 7104321	Hydraulic Clamp (Includes cylinder, hoses & pins, and port relief) (For excavators with long arm option must also order hose extension P/N 6714741 (Qty. 2) from Parts) (329 excavator must also order Auxiliary Hydraulics p/n 7126596) (The Hydraulic Clamp is NOT approved for use with the extendable arm option) (Hydraulic Clamp is NOT recommended in combination with Hydraulic Breakers) (For non-current excavators refer to Bobcat Parts for correct Port Relief, Port Relief Block and Clamp Cylinder Bracket.)	\$1,923.00
(E26) Class III 7206504	Hydraulic Clamp, Standard Arm (Includes cylinder, hoses & pins)	\$1,923.00
7206505	Hydraulic Clamp, Long Arm (Includes cylinder, hoses & pins)	\$1,923.00

Hydraulic Clamp is NOT recommended in combination with Hydraulic Breakers

(E32, E35) Class III 7171388	Hydraulic Clamp, Standard Arm (Includes cylinder, hoses & pins)	\$2,069.00
7171389	Hydraulic Clamp, Long Arm (Includes cylinder, hoses & pins)	\$2,069.00
7203200	Hydraulic Clamp, Extendable Arm (The Hydraulic Clamp is approved for use with the extendable arm extended) (Includes cylinder, hoses & pins)	\$2,069.00
(E42) Class III 7182692	Hydraulic Clamp, Standard Arm (For use with Class III Buckets) (Includes cylinder, hoses & pins)	\$2,177.00
7182693	Hydraulic Clamp, Long Arm (For use with Class III Buckets) (Includes cylinder, hoses & pins)	\$2,177.00
(337, 341) CLASS IV 7131930	Hydraulic Clamp (Includes cylinder, hoses & pins, but for 337 with long arm must also order hose extension P/N 6808278 (Qty. 2) from Parts) (Use with a Trenching Bucket or 3-Tine Grapple)	\$2,979.00
(335, 435) CLASS IV 7131931	Hydraulic Clamp (Includes cylinder, hoses & pins) (Use with a Trenching Bucket or 3-Tine Grapple) (If using with 435 equipped with Long Arm must also order hose extensions p/n 6808278, qty 2)	\$2,510.00

Clamp
Bobcat Excavator Attachment

Part Number	Attachment	SLP IN US \$
-------------	------------	--------------

Hydraulic Clamp is NOT recommended in combination with Hydraulic Breakers

(E42, E45) CLASS IV

7186614	Hydraulic Clamp, Standard Arm.....	\$2,510.00
	(For use with Class IV Buckets) (Includes cylinder, hoses & pins)	
7186615	Hydraulic Clamp, Long Arm.....	\$2,510.00
	(For use with Class IV Buckets) (Includes cylinder, hoses & pins)	
7269969	Hydraulic Clamp, Extendable Arm.....	\$2,510.00
	(For use with Class IV Buckets) (Includes cylinder, hoses & pins)	

(E50) CLASS IV

7182661	Hydraulic Clamp, Standard Arm.....	\$2,617.00
	(Includes cylinder, hoses & pins)	
7182663	Hydraulic Clamp, Long Arm.....	\$2,617.00
	(Includes cylinder, hoses & pins)	

(E55) CLASS IV

7182663	Hydraulic Clamp.....	\$2,617.00
	(For use with Class IV Buckets) (Includes cylinder, hoses & pins)	
7269968	Hydraulic Clamp, Extendable Arm.....	\$2,618.00
	(For use with Class IV Buckets) (Includes cylinder, hoses & pins)	

(E60, E63)

7187919	Hydraulic Clamp.....	\$2,919.00
	(Includes cylinder, hoses & pins)	

(E80, E85)

7171909	Hydraulic Clamp.....	\$4,196.00
	(Includes cylinder, hoses & 45mm pins)	

(E85 R-Series)

7333391	Hydraulic Clamp.....	\$4,134.00
	(Includes cylinder, hoses & 55mm pins)	

Clamp
Bobcat Excavator Attachment

Attachment

Part Number	Description	SLP IN US \$
-------------	-------------	--------------

Hydraulic Clamp is NOT recommended in combination with Hydraulic Breakers

Part Number	Dealer Installed Accessories - Order From Parts Description
-------------	---

For current Dealer Installed Accessories pricing, reference BobQuote or Dealer Parts Department.

ACCESSORIES FOR Pro Clamp™ System

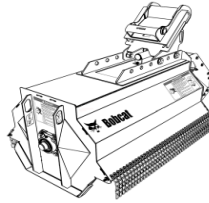
7227745	Material Clamp (Class III).....	Parts	\$ _____
7230840	Material Clamp (Clamp IV).....	Parts	\$ _____
7227740	Grading Clamp (Class III).....	Parts	\$ _____
7230850	Grading Clamp (Class IV).....	Parts	\$ _____

Destination Charge/Fuel Surcharge
Refer to BobQuote or BobcatNET>>Other Resources>>Pricing Homepage for current Destination and Fuel Charges

Attachment	Assembly Required	Installation Time (Hrs)
-------------------	--------------------------	--------------------------------

E26-E55 Hydraulic Clamp.....	Install Clamp.....	2.0
E32i-E55 Pro Clamp System.....	Install Clamp.....	2.0
322-323 Hydraulic Clamp.....	Weld cylinder bracket, install clamp and port relief.....	2.0
325-334 Hydraulic Clamp.....	Install clamp and port relief.....	2.5
335-435, E32, E35 Hydraulic Clamp.....	Install Clamp.....	1.5
442 Hydraulic Clamp.....	Install Clamp.....	1.0
442.....	Weld cylinder bracket onto dipper s/n 522311490 & below.....	1.0

Flail Mower Bobcat Excavator Attachment



Quick Specs

	<u>30FM</u>	<u>40FM</u>	<u>40FMR</u>
Weight (with X-Change Mount).....	649 lbs.	736 lbs.	881 lbs.
Weight (with Pin-On Mount).....	N/A	708 lbs.	876 lbs.
Working Width.....	30"	40"	40"
Overall Width.....	50.4"	60.4"	60.4"
Cutting Capacity.....	Up to 4" (Only up to 1.5" on E32i, E35i)	Up to 4"	Up to 4"
Hydraulic Flow.....	12.2-19.5 GPM	14-22.4 GPM	18.4-31.7 GPM
Number of Knives.....	27	36	36
Mount Options.....	X-Change	X-Change, Pin-On	X-Change, Pin-On

Part Number	Attachment	SLP IN US \$
(E32, E35) (E32i*, E35i*)		
7225484	30" Flail Mower - 30FM..... (Approved only for excavator models equipped with an enclosed cab) (Approved on Long and Extendable Arm – must have extendable arm retracted during flail mower use.) (Must also order case drain kit, hose kit and mounting cap)	\$7,532.00
(E42, E45, E50, E55)		
7225485	40" Flail Mower - 40FM..... (Approved only for excavator models equipped with an enclosed cab) (Approved on Long and Extendable Arm – must have extendable arm retracted during flail mower use.) (Must also order case drain kit, hose kit and mounting cap)	\$8,466.00
(E63, E80, E85)		
7225486	40" Reinforced Flail Mower - 40FMR..... (Approved only for excavator models equipped with an enclosed cab) (Must also order case drain kit, hose kit and mounting cap)	\$9,400.00

Part Number	Factory Installed Accessories	SLP IN US \$
<u>Accessories - 30" Flail Mower - 30FM</u>		
7245468	Hoses for E32, E32i, E35, E35i..... (Includes hoses and quick couplers) (Must order 7245617 and 7238337)	\$221.00
7238337	X-Change Mounting Cap - E32, E32i, E35, E35i..... (Mounting cap will arrive assembled on Flail Mower) (Must also order a hose kit and case drain kit)	\$851.00

Flail Mower Bobcat Excavator Attachment

Accessories - 40" Flail Mower - 40FM

7245468	Hoses for R2-Series E42/E50 All Arm Configurations..... \$221.00 (Includes hoses and quick couplers) (Must order a mounting cap and case drain kit)
7245468	Hoses for Std. Arm E42, E45, E50 and Ext Arm E42, E45..... \$221.00 (Includes hoses and quick couplers) (Must order a mounting cap and case drain kit)
7245459	Hoses for Std Arm E42, E45, E50, E55, and E55 Ext Arm..... \$249.00 (Includes hoses and quick couplers) (Must order a mounting cap and case drain kit)
7238337	X-Change Mounting Cap - E42, E45, E50, E55..... \$851.00 (Mounting cap will arrive assembled on Flail Mower) (Must also order a hose kit and case drain kit)
7246964	Pin-On Mounting Cap - E42, E45, E50, E55..... \$851.00 (Mounting cap will arrive assembled on Flail Mower) (Must also order a hose kit and case drain kit)

Accessories - 40" Reinforced Flail Mower - 40FMR

7260182	Hoses for 40FMR on E63, E80 and E85..... \$250.00 (Includes hoses and quick couplers) (Must order a mounting cap and case drain kit)
7238337	X-Change Mounting Cap - E63..... \$851.00 (Mounting cap will arrive assembled on Flail Mower) (Must also order a hose kit and case drain kit)
7238338	Pin-On Mounting Cap - E80, E85..... \$1,072.00 (Mounting cap will arrive assembled on Flail Mower) (Must also order a hose kit and case drain kit, mounting cap uses 45 mm pins)
7307134	Pin-On Mounting Cap - E85 R-Series..... \$1,056.00 (Mounting cap will arrive assembled on Flail Mower) (Must also order a hose kit and case drain kit, mounting cap uses 55 mm pins)

Part Number	Dealer Installed Accessories - Order From Parts Description
-------------	---

Accessories - 30FM

7245617	Case Drain Kit for E32, E35..... \$ ____ (90 minute assembly time)
---------	--

Accessories - 40FM

7393097	Case Drain Kit for R2-Series E42/E50 All Arms..... \$ ____ (90 minute assembly time)
7246494	Case Drain Kit for E42..... \$ ____ (90 minute assembly time)
7245618	Case Drain Kit for E45, E50, E55..... \$ ____ (90 minute assembly time)

Accessories - 40FMR

7252156	Case Drain Kit for E63..... \$ ____ (90 minute assembly time)
7252158	Case Drain Kit for E80, E85..... \$ ____ (90 minute assembly time)

Destination Charge/Fuel Surcharge

Refer to BobQuote or BobcatNET>>Other Resources>>Pricing Homepage for current Destination and Fuel Charges

Attachment	Assembly Required	Installation Time (Hrs)
Case Drain Kit.....	Installation.....	1.5

Grapple, 3-Tine Bobcat Excavator Attachment



Quick Specs

	<u>Grapple, Class III</u>	<u>Grapple, Class IV</u>
Operating Weight.....	200 lbs.	225 lbs.
Grapple Width.....	20.5"	20.5"
Tine Radius.....	27.0"	33.0"
Tine Thickness.....	0.75"	0.75"

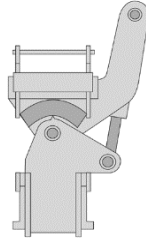
Part Number	Attachment Description	SLP IN US \$
-------------	------------------------	--------------

(325, 328, 329, 331, 334, 425, 430) (E26, E32, E35)		
7102977	3-Tine Grapple, Class III.....	\$727.00
	(X-Change System Required) (Hydraulic Clamp is recommended when using 3-Tine Grapple)	
(335, 337, 341, 435) (E42, E45, E50, E55, E60, E63)		
6817104	3-Tine Grapple, Class IV.....	\$781.00
	(X-Change System Required) (Hydraulic Clamp is recommended when using 3-Tine Grapple)	

Destination Charge/Fuel Surcharge
Refer to BobQuote or BobcatNET>>Other Resources>>Pricing Homepage for current Destination and Fuel Charges

Attachment	Assembly Required	Installation Time (Hrs)
3-Tine Grapple.....	None.....	-

Hydra-Tilt Bobcat Excavator Attachment



Quick Specs

Operating Weight..... 250 lbs.
Width..... 17.5"
Length..... 31"
Side-to-Side Rotation..... 60°
Output Torque..... 3,210 ft-lbs. @ 3000 psi

Part Number	Attachment Description	SLP IN US \$
-------------	------------------------	--------------

(325, 328, 329, 331, 331E, 334, 335, 337, 341, 425, 430, 435)
 (E26, E32, E35, E42, E45, E50, E55, E60, E63)
6728578 **Hydra-Tilt**..... **\$2,187.00**
 (Must also order Hose Kit below)
 (Must also order Auxiliary Hydraulics p/n 7126596 if using with 329 excavator)
 (Not compatible with E42-E55 Pro Clamp™)

NOTE: Extendable Arm must be pinned in the retracted position to use hydraulic attachments.

Part Number	Dealer Installed Accessories - Order From Sales Description	SLP in US \$
-------------	---	--------------

(325, 329, 331, 331E, 425, 430) (E26, E32, E35, E60, E63) (R2-Series E42/E50)
6729174 **Excavator Hose Kit**..... **\$210.00**
 (This hose kit must be used on above excavators when using a Hydra-Tilt)

(328, 334, 335, 337, 430 Long Arm, 435) (E42, E45, E50)
 (E26, E32, E35, E42 E45 – All with Long Arm)
6729175 **Excavator Hose Kit**..... **\$221.00**
 (This hose kit must be used on above excavators when using a Hydra-Tilt)

(341 Long Arm, 435 Long Arm, E50 Long Arm, E55)
6729176 **Excavator Hose Kit**..... **\$232.00**
 (This hose kit must be used on above excavators when using a Hydra-Tilt)

Destination Charge/Fuel Surcharge

Refer to BobQuote or BobcatNET>>Other Resources>>Pricing Homepage for current Destination and Fuel Charges

Attachment	Assembly Required	Installation Time (Hrs)
------------	-------------------	-------------------------

Hydra-Tilt.....	Install Hoses.....	0.50
-----------------	--------------------	-------------

Laser Equipment
Bobcat Excavator Attachment

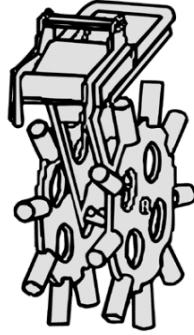
Part Number	Dealer Installed Accessories - Order From Sales Description	SLP in US \$
-------------	---	--------------

(322, 323, 325, 328, 329, 331, 331E, 334, 335, 337, 341, 425, 430, 435, 442)
 (E26, E32, E35, E42, E45, E50, E55, E60, E63, E80, E85)

7387821	Laser Receiver, CR700 (Can be used as handheld, machine, or rod-mounted laser receiver) (Includes magnetic mount for machines and clamp mount for grader rod)	\$483.00
7275232	Laser Transmitter, Dual Slope (Trimble GL422; Includes CR700 Receiver)	\$2,733.00
6688806	Tripod	\$273.00

Destination Charge/Fuel Surcharge
Refer to BobQuote or BobcatNET>>Other Resources>>Pricing Homepage for current Destination and Fuel Charges

**Packer Wheel
 Bobcat Excavator Attachment**



Quick Specs

Operating Weight..... 386 lbs.
 Width..... 11.0"
 Length..... 39.8"
 Wheel Assembly..... 2
 Wheel Diameter..... 30.0"
 Sheepfoot (hollow tube)..... 18 (9 per wheel)

Part Number	Attachment	SLP IN US \$
-------------	------------	--------------

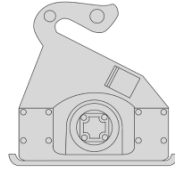
(325, 328, 329, 331, 331E, 334, 335, 337, 341, 425, 430, 435) (E26, E32, E35, E42, E45, E50, E55, E60, E63)		
6806644	Packer Wheel.....	\$2,252.00

Destination Charge/Fuel Surcharge
 Refer to BobQuote or BobcatNET>>Other Resources>>Pricing Homepage for current Destination and Fuel Charges

Attachment	Assembly Required	Installation Time (Hrs)
------------	-------------------	-------------------------

None.....	None.....	-
-----------	-----------	---

Plate Compactor Bobcat Excavator Attachment



Quick Specs

	<u>PCF34</u>	<u>PCF64</u>
Operating Weight.....	478 lbs.	856 lbs.
Width.....	18.75"	23.5"
Length.....	26.0"	34.2"
Dynamic Force.....	3400 lbs.	6400 lbs.
Frequency.....	2100 VPM	2000 VPM
Minimum Flow.....	12 GPM	12 GPM
Maximum Flow.....	28 GPM	28 GPM

Part Number	Attachment Description	SLP IN US \$
--------------------	-------------------------------	---------------------

(E32, E35, E42, E45, E50, E55, E60, E63)		
7211623	PCF34 Plate Compactor.....	\$5,267.00
	(Must also order X-Change Mounting Cap and Hose Kit)	
(E55, E60, E63, E80, E85)		
7210256	PCF64 Plate Compactor.....	\$6,081.00
	(Must also order Mounting Cap and Hose Kit)	

NOTE: Extendable Arm must be pinned in the retracted position to use hydraulic attachments.

Part Number	Dealer Installed Accessories - Order From Sales Description	SLP in US \$
--------------------	--	---------------------

<u>Mounting Frame - PCF34</u>		
7113656	X-Change Mounting Cap - E32, E35, E42, E45, E50, E55, E60, E63.....	\$483.00
	(Must also order a hose kit)	
<u>Mounting Frame - PCF64</u>		
7210254	Mounting Cap - E80, E85 M-Series.....	\$674.00
	(Must also order a hose kit, mounting caps uses 45mm pins)	
7307178	Mounting Cap - E85 R-Series.....	\$657.00
	(Must also order a hose kit, mounting caps uses 55mm pins)	
7113657	X-Change Mounting Cap - E55, E60, E63.....	\$499.00
	(Must also order a hose kit)	
<u>Hose Kits- PCF34, PCF64</u>		
7217834	Hose Kit - for E32, E35, E42, E45, E50 Long Arms & E55.....	\$226.00
	(Includes hoses and quick couplers)	
7217835	Hose Kit -for (R2 E42/E50 All Arms), E32, E35, E42, E45, E50 Std. & Ext. Arm.....	\$210.00
	(Includes hoses and quick couplers)	
7217836	Hose Kit - for E60, E63, E80, E85.....	\$296.00
	(Includes hoses and quick couplers)	

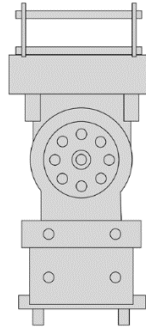
**Plate Compactor
Bobcat Excavator Attachment**

Destination Charge/Fuel Surcharge

Refer to BobQuote or BobcatNET>>Other Resources>>Pricing Homepage for current Destination and Fuel Charges

Attachment	Assembly Required	Installation Time (Hrs)
Plate Compactor.....	Install Hoses and Mounting Cap.....	1.5

Power Tilt®
Bobcat Excavator Attachment



Quick Specs

	<u><i>PTX3</i></u>	<u><i>PTX4</i></u>
Operating Weight.....	170 lbs.	285 lbs.
Width.....	11"	11"
Length.....	25"	25"
Output Torque.....	2100 ft. lbs. @ 3000 psi	3250 ft. lbs. @ 3000 psi
Side-to-Side Rotation.....	178°	180°

Attachment

Part Number	Description	SLP IN US \$
-------------	-------------	--------------

(325, 328, 329, 331, 331E, 334, 425, 430) (E26, E32, E35)

7319636	PTX3.....	\$4,912.00
	(Includes hoses and quick couplers) (Must also order Auxiliary Hydraulics p/n 7126596 if using with 329 excavator)	

NOTE: Extendable Arm must be pinned in the retracted position to use hydraulic attachments.

(335, 337, 341, 435) (E42, E45, E50, E55, E60, E63)

7319637	PTX4.....	\$6,515.00
	(Includes hoses and quick couplers) (Must also order Hose Kit below)	

Part Number	Dealer Installed Accessories - Order From Sales Description	SLP in US \$
-------------	---	--------------

(R2-Series E42/50 All Arms) (325, 425) (E63, E26 Short Arm)

7331054	Excavator Hose Kit.....	\$202.00
	(This hose kit must be used on above excavators when using a Power Tilt)	

(329, 331, 331E, 430, 328, 335, 435) (E32/35 Short Arm, E32/35 Ext. Arm, E42/45 Ext Arm, E42/45 Short Arm, E26 Long Arm)

7331055	Excavator Hose Kit.....	\$202.00
	(This hose kit must be used on above excavators when using a Power Tilt)	

(334, 337, 430 Long Arm) (E50 Short Arm, E32/35 Long Arm, E55 Ext. Arm, E42/45 Long Arm)

7331056	Excavator Hose Kit.....	\$205.00
	(This hose kit must be used on above excavators when using a Power Tilt)	

(341 Long Arm, 435 Long Arm) (E55/50 Long Arm)

7331057	Excavator Hose Kit.....	\$205.00
	(This hose kit must be used on above excavators when using a Power Tilt)	

**Power Tilt®
Bobcat Excavator Attachment**

Destination Charge/Fuel Surcharge
Refer to BobQuote or BobcatNET>>Other Resources>>Pricing Homepage for current Destination and Fuel Charges

Attachment	Assembly Required	Installation Time (Hrs)
------------	-------------------	-------------------------

Power Tilt.....	None.....	-
-----------------	-----------	---

Ripper Bobcat Excavator Attachment



Ripper with X-Change Mount



Ripper with Pin-On Mount

Quick Specs

	<u>Ripper with X-Change</u>	<u>Ripper with Pin-On</u>
Operating Weight.....	270 lbs.	255 lbs.
Tooth Radius.....	36"	36"
Shank Thickness.....	1.5"	1.5"

Attachment

Part Number	Description	SLP IN US \$
(E32, E35)		
7328289	Ripper, 35 mm Pins.....	\$1,010.00
(E42, E45, E50, E55, E60, E63)		
7328290	Ripper, 45 mm Pins.....	\$1,010.00
(E32, E35, E42, E45, E50, E55, E60, E63) with X-Change system		
7328288	Ripper, X-Change.....	\$1,025.00
(E80, E85 M-Series)		
7328287	Ripper 45 mm Pin 8T.....	\$1,377.00
(E85 R-Series)		
7328286	Ripper 55 mm Pin 8T.....	\$1,357.00

If using a pin grabber couple order pin kits from below:

7329828	35 mm Attachment Pin Kit.....	PARTS
7328361	45 mm Attachment Pin Kit.....	PARTS
7328360	55 mm Attachment Pin Kit.....	PARTS

Destination Charge/Fuel Surcharge

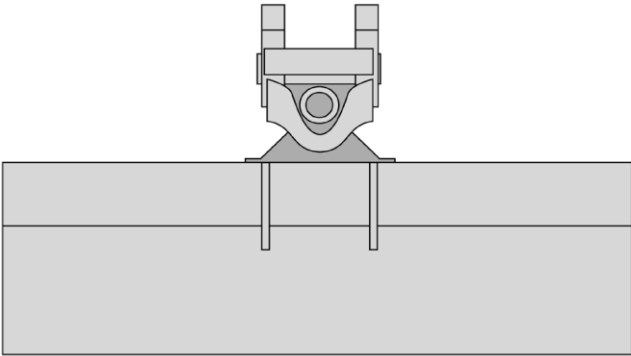
Refer to BobQuote or BobcatNET>>Other Resources>>Pricing Homepage for current Destination and Fuel Charges

Assembly Required

**Installation
 Time (Hrs)**

Attachment	Ripper..... None.....	-
-------------------	-----------------------	---

**Tilt Bucket
 Bobcat Excavator Attachment**



Quick Specs

P/N 7171901
Ship Weight..... 656 lbs.
Mounting..... Pin-On
Tilt..... (+/-) 45 degrees
SAE Heaped Capacity..... 12.5 ft³

Part Number	Attachment	SLP IN US \$
-------------	------------	--------------

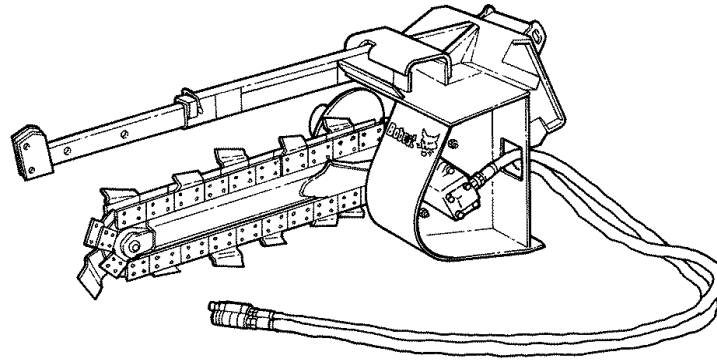
(E80, E85) 7171901	*Not compatible with R-Series E85 48" Tilting Grade Bucket, Smooth Lip.....	\$7,540.00
-----------------------	--	------------

Destination Charge/Fuel Surcharge
 Refer to BobQuote or BobcatNET>>Other Resources>>Pricing Homepage for current Destination and Fuel Charges

Attachment	Assembly Required	Installation Time (Hrs)
------------	-------------------	-------------------------

Tilt Bucket.....	None.....	-
------------------	-----------	---

Trencher
Bobcat Excavator Attachment



Quick Specs

Operating Weight (without teeth).....	570 lbs.
Flow Range.....	13-20 gpm
Maximum Operating Pressure.....	3000 psi
Overall Width.....	30.6"
Overall Length.....	68.2"
Side Shift Travel.....	N/A
Auger Diameter.....	12"
Dig Depth.....	2'
Standard Boom Length.....	39.4"
Trenching Widths Available.....	4" to 8"

Part Number	Attachment	SLP IN US \$
-------------	------------	--------------

(331, 331E, 334, 335, 337, 341, 430, 435) (E32, E35, E42, E45, E50, E55)		
M7012	MX112 Trencher.....	\$3,808.00
	(Includes X-Change mounting frame, hoses, couplers, 2' depth, no sideshift) (Can only order one chain option per trencher model)	

NOTE: Extendable Arm must be pinned in the retracted position to use hydraulic attachments.

MX112 Chain Configuration Options (Factory Installed)
 Chains are 1.654" Double Standard (DS) Anti-Back Flex (ABF)

M7012-R01-C01	2' x 4" Cup Teeth, Single Standard Pattern.....	\$491.00
M7012-R01-C02	2' x 4" Cup Teeth, Double Standard Pattern.....	\$599.00
M7012-R01-C03	2' x 4" Cup & Carbide Teeth, Double Standard Pattern.....	\$1,094.00

Trencher Bobcat Excavator Attachment

Part Number	Dealer Installed Accessories - Order From Sales Description	SLP in US \$
-------------	--	--------------

MX112 Chain Configuration Accessories (Replacement Chain - Dealer Installed)

Chains are 1.654" Double Standard (DS) Anti-Back Flex (ABF)

6959315	2' x 4" Cup Teeth, Single Standard Pattern..... (Ship Weight 76 lbs.)	\$480.00
6959323	2' x 4" Cup Teeth, Double Standard Pattern..... (Ship Weight 85 lbs.)	\$576.00
6959333	2' x 4" Cup & Carbide Teeth, Double Standard Pattern..... (Ship Weight 91 lbs.)	\$1,089.00

Part Number	Dealer Installed Accessories - Order From Parts Description
-------------	--

For current Dealer Installed Accessories pricing, reference BobQuote or Dealer Parts Department.

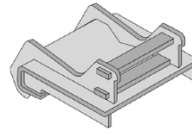
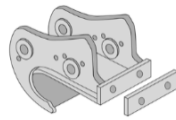
6959248	Boom Guide Assembly..... (Needed for 3' dig depth) (Also required (2) ¾" bolts # 84G3712 additional 1' chain, and additional teeth or order 3' chain configuration from LT112 accessories)	Parts	\$	_____
6705531	Carbide Tooth Kit..... (Ship Weight 16 lbs.)	Parts	\$	_____
6701918	Cup Tooth Kit..... (Ship Weight 13 lbs.)	Parts	\$	_____
6959302	Double Standard Chain..... (No teeth attached)(Ship Weight 1 lb.)	Parts	\$	_____
6959301	Double Standard Chain - 16P..... (For additional 1' dig depth)	Parts	\$	_____
7110909	Spacer Kit, 6"..... (Used with cup teeth for 6" width)	Parts	\$	_____
7110910	Spacer Kit, 8"..... (Used with cup teeth for 8" width)	Parts	\$	_____
6806974	Trench Cleaner Adapter, 6"..... (Used with Trench Cleaner Kit) (Ship Weight 3 lbs.)	Parts	\$	_____
6806975	Trench Cleaner Adapter, 8"..... (Used with Trench Cleaner Kit) (Ship Weight 4 lbs.)	Parts	\$	_____

Destination Charge/Fuel Surcharge

Refer to BobQuote or BobcatNET>>Other Resources>>Pricing Homepage for current Destination and Fuel Charges

Attachment	Assembly Required	Installation Time (Hrs)
------------	-------------------	-------------------------

MX112.....	None.....	-
------------	-----------	---



**Replacement
HD X-Change Kit**

Bolt-On-X-Change

**Replacement
HD X-Change Kit**

Wide Link

442 Coupler

Part Number	Attachment	SLP IN US \$
-------------	------------	--------------

For current Attachment pricing, reference BobQuote or Dealer Parts Department.

(322, 323, 324, E20)			
6727180	Bolt-On X-Change, 322 - 324, E20.....	Sales	\$243.00
	(Must also order Bit and PN 6817100)		
(325, 328, 425)			
7105177	Replacement Heavy Duty X-Change Kit.....	Parts	\$ ____
	(Utilizes pin retention system to secure attachment) (Replacement Heavy Duty X-Change assembly; 325G SN 234112006 & above, 328G SN 234211808 & above)		
	(Can also be used in conjunction with wide link PN 6805374 to convert latching X-Change excavators to HD X-Change)		
	(Ship Weight - 48 lbs.; Estimated Install Time 1 hrs.)		
(325, 328)			
6813306	X-Change Kit (Non-Current).....	Parts	\$ ____
	(Includes automatic latch retention system for attachment mounting)		
	(Ship Weight – 75 lbs.; Estimated Install Time 1.5 hrs.)		
6805374	Wide Link.....	Parts	\$ ____
	(Recommended when converting excavator from standard X-change to Heavy Duty X-Change)		
6817828	Bolt-On Conversion Kit, Heavy Duty X-Change.....	Parts	\$ ____
	(Includes hardware to secure a non-current latching S-Change attachment on a Heavy Duty X-Change excavator)		
6736191	Attachment Conversion Kit, Heavy Duty X-Change.....	Parts	\$ ____
	(Used to convert non-current attachment interface to Heavy Duty pin retention system)		
(E26, E32, E35)			
7178041	Replacement Heavy Duty X-Change Kit.....	Sales	\$669.00
	(Utilizes pin retention system to secure attachment) (Replacement X-Change assembly)		
(335, 337, 341, 435)			
6818270	Replacement Heavy Duty X-Change Kit.....	Parts	\$ ____
	(Utilizes pin retention system to secure attachment)(Ship Weight - 48 lbs) (Estimated Install Time 1 hrs.)		
	(Replacement Heavy Duty X-Change assembly; 337G, 341G and 435G)		
	(Can also be used in conjunction with wide link PN 6805281 to convert latching X-Change excavators to HD X-Change) (Ship Weight - 48 lbs.; Estimated Install Time 1 hrs.)		
(337, 341, 435)			
6805281	Wide Link.....	Parts	\$ ____
	(Used when converting latching X-change excavators to Heavy Duty X-Change)		
6817828	Bolt-On Conversion Kit, Heavy Duty X-Change.....	Parts	\$ ____
	(Includes hardware to secure a non-current latching S-Change attachment on a Heavy Duty X-Change excavator)		
(325, 328, 329, 331, 331E, 334, 337, 341, 430, 435) (E32, E35, E42, E45, E50, E55, E60, E63)			
6737698	X-Change Adapter Mounting Frame.....	Sales	\$496.00
	(Used to convert attachments to X-Change mounting system)		
	(Cast X-Change welded to fab flat plate, welds to flat surface) (Not compatible with 12" pin-on)		
	(Ship Weight – 50 lbs.)		

Part Number	Attachment	SLP IN US \$
-------------	------------	--------------

For current Attachment pricing, reference BobQuote or Dealer Parts Department.

6807074	X-Change Release Tool..... (Replacement for lost or damaged tool on non-current latching X-Change systems)(Ship Weight – 3 lbs.)	Parts \$ _____
(442)		
7125318	Coupler , Pin Grabber..... (Compatible with attachment pin spacing of 10.8 inches) (If used with multiple attachments, must also order two each of 6690458 – Pin; 6690459 – Collar; 17C864 – Bolt; 4E8 – Washer; 61D8 - Nut from Parts for each additional attachment)	Parts \$2,310.00
(E80, E85M-Series) (45 mm pin size)		
7171904	Coupler , Pin Grabber..... (Compatible with attachment pin spacing of 11.5 inches) (E80 attachments)	Sales \$2,650.00
7171906	Coupler , Pin Grabber..... (Compatible with attachment pin spacing of 10.8 inches) (E80 to 442 attachments)	Sales \$2,757.00
(E85R-Series) (55 mm pin size)		
7334073	Pin Grabber, Manual - E85R: 55mm pins <=> 55 mm pins.....	Parts \$ _____
7332359	Pin Grabber, Manual - E85R: 55mm pins <=> 45 mm pins..... (Allows E85R to utilize 45 mm attachment)	Parts \$ _____
7350524	Hyd. Pin Grabber Kit: E85R: 55mm pins <=> 55 mm pins..... (Hydraulic Pin Grabber) (For use on E85R's w/ factory installed Pin Grabber (Ready) Plumbing Option) (Plumbing not included)	Parts \$ _____
(E145)		
7382902	Hyd. Pin Grabber w/ Connection Kit.....	Sales \$6,677.00

Kits are available for various pin sizes (Kit includes 2 pins, 2 bolts and 2 nuts). These "soft" pins must be used to couple attachments to the Pin Grabber Coupler

7329828	35 mm Attachment Pin Kit..... For use with attachments that are used with the Pin-Grabber quick coupler. Applicable to 35mm pin diameter attachments only. Includes two pins and required hardware. Estimated Installation Time: 0.25 hr. (Single Pin = 7329828)	\$ _____
7328361	45 mm Attachment Pin Kit..... For use with attachments that are used with the Pin-Grabber quick coupler. Applicable to 45mm pin diameter attachments only. Includes two pins and required hardware. Estimated Installation Time: 0.25 hr. (Single Pin = 7332826)	\$ _____
7328360	55 mm Attachment Pin Kit..... For use with attachments that are used with the Pin-Grabber quick coupler. Applicable to 55mm pin diameter attachments only. Includes two pins and required hardware. Estimated Installation Time: 0.25 hr. (Single Pin = 7331936)	\$ _____
7301268	55mm "Hard" Pin..... (Pins Excavator Arm to Pin Grabber) (Qty. 1)	\$ _____